

NDB/DME OLT <u>346</u> Chan <b>106 (115.9)</b>	APP CRS <b>255°</b>	Rwy Idg <b>5001</b> TDZE <b>113</b> Apt Elev <b>113</b>
--	------------------------	---

NDB RWY 25  
SOLDOTNA (SXQ)(PASX)

**T  
A**

Circling NA to Rwy 7S and 25S. Circling Rwy 7 NA at night.

**MISSED APPROACH:** Climb to 1000 then climbing left turn to 2400 direct OLT NDB and hold.

AWOS-3P <b>135.45</b>	ANCHORAGE CENTER <b>125.7 379.1</b>	KENAI RADIO <b>122.35</b>	CTAF <b>122.5</b>
--------------------------	--	------------------------------	----------------------

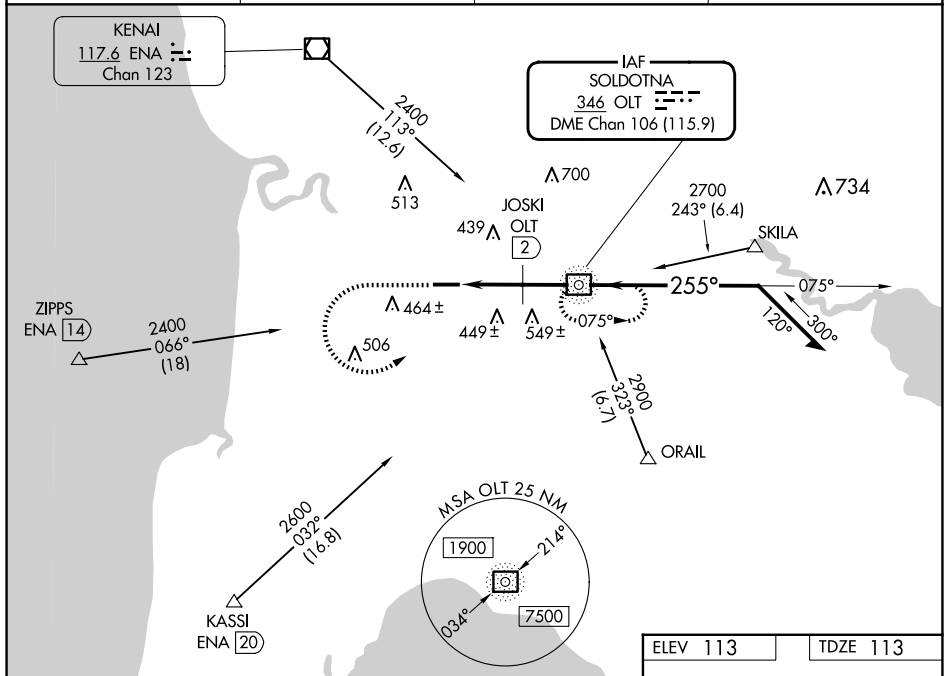


Diagram illustrating the JOSKI FIX procedure. The diagram shows a flight path starting at 1000, climbing to 2400, and then following a curved path. Key altitudes and distances are marked: 1000, 2400, 900\* (940 when using Kencsi altimeter setting), 1500, and 2400. The path includes a 2.3 NM leg and a 2 NM leg. A 3.02° TCH 43 is indicated. The diagram also shows a 075° heading and a 255° heading. A note states "Remain within 10 NM".

