

WAAS CH 86915 W08A	APP CRS 080°	Rwy Idg TDZE Apt Elev	5900 49 49
--	------------------------	-----------------------------	---------------------------------------

RNAV (GPS) RWY 8

WILEY POST-WILL ROGERS MEML (BRW)(PABR)

RNP APCH-GPS.

▼

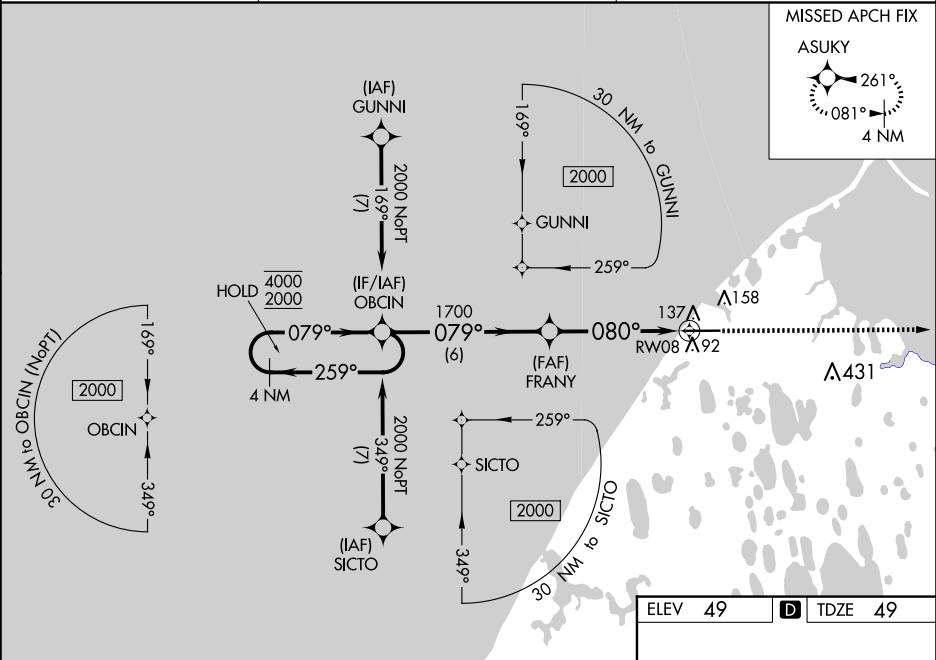
▲

Inop table does not apply to LPV and LNAV/VNAV all Cats.
For uncompensated Baro-VNAV systems, LNAV/VNAV NA below
-18°C or above 54°C. Circling NA for Cat A north of Rwy 8-26.

MALSR

MISSED APPROACH: Climb to 2000
direct ASUKY and hold.

AFIS 132.15	ANCHORAGE CENTER 135.3 239.25	BARROW RADIO 123.6 (CTAF)
-----------------------	---	-------------------------------------



VGSI and RNAV glidepath not coincident (VGSI Angle 3.00/TCH 51).					2000 ↑	ASUKY ✧
<div>4 NM Holding Pattern</div> <div>4000 ← 259° 2000 → 079°</div> <div>GP 3.00° TCH 57</div> <div>OBCIN</div> <div>FRANY</div> <div>1700</div> <div>079°</div> <div>080°</div> <div>0.9 NM to RWY08</div> <div>RWY08</div> <div>6 NM</div> <div>4.1 NM</div> <div>0.9 NM</div>					<div>080°</div> <div>7100 X 1500</div> <div>ASUKY</div> <div>84</div> <div>20</div>	
CATEGORY	A	B	C	D		
LPV DA	249/40		200 (200-¾)			
LNAV/VNAV DA	299/40		250 (300-¾)			
LNAV MDA	400/40		351 (400-¾)			
CIRCLING	420-1 371 (400-1)	500-1 451 (500-1)	500-1½ 451 (500-1½)	680-2 631 (700-2)	REIL Rwy 26 HIRL Rwy 8-26	