

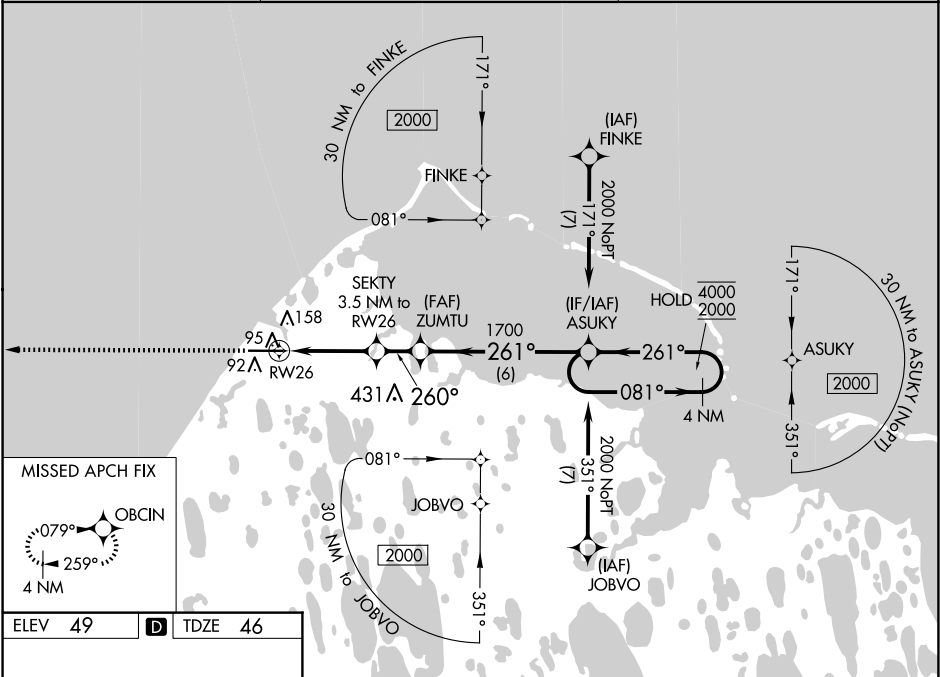
WAAS CH <b>73041</b> <b>W26A</b>	APP CRS <b>260°</b>	Rwy Idg TDZE <b>46</b> Apt Elev <b>49</b>	<b>5900</b>
--	------------------------	---	-------------

RNAV (GPS) RWY 26

WILEY POST-WILL ROGERS MEML (BRW)(PABR)

RNP APCH - GPS.	MISSED APPROACH: Climb to 2000 direct OBCIN and hold.
<div><div>▼</div><div>For uncompensated Baro-VNAV systems, LNAV/VNAV</div><div>▲</div><div>NA below -19°C or above 54°C. Circling NA for Cat A north of Rwy 8-26</div></div>	

AFIS <b>132.15</b>	ANCHORAGE CENTER <b>135.3 239.25</b>	BARROW RADIO <b>123.6 (CTAF) 0</b>
-----------------------	---	---------------------------------------



ELEV <b>49</b>	<b>D</b>	TDZE <b>46</b>
----------------	----------	----------------

<div><div>2000</div><div>OBCIN</div><div>SEKTY 3.5 NM to RW26</div><div>ZUMTU 1700</div><div>ASUKY 4 NM Holding Pattern</div><div>0.9 NM to RW26</div><div>RW26</div><div>0.9 2.6 NM 1.6 NM 6 NM</div><div>GP 3.00° TCH 50</div></div>	2000	OBCIN	SEKTY	ZUMTU	ASUKY
	0.9	2.6 NM	1.6 NM	6 NM	4 NM Holding Pattern
	0.9	2.6 NM	1.6 NM	6 NM	4 NM Holding Pattern
	0.9	2.6 NM	1.6 NM	6 NM	4 NM Holding Pattern
	0.9	2.6 NM	1.6 NM	6 NM	4 NM Holding Pattern
CATEGORY	A	B	C	D	
LPV DA	246-1	200 (200-1)			
LNAV/VNAV DA	296-1	250 (300-1)			
LNAV MDA	360-1	314 (400-1)			
CIRCLING	420-1 371 (400-1)	500-1 451 (500-1)	500-1½ 451 (500-1½)	680-2 631 (700-2)	

REIL Rwy 26 0  
HIRL Rwy 8-26 0