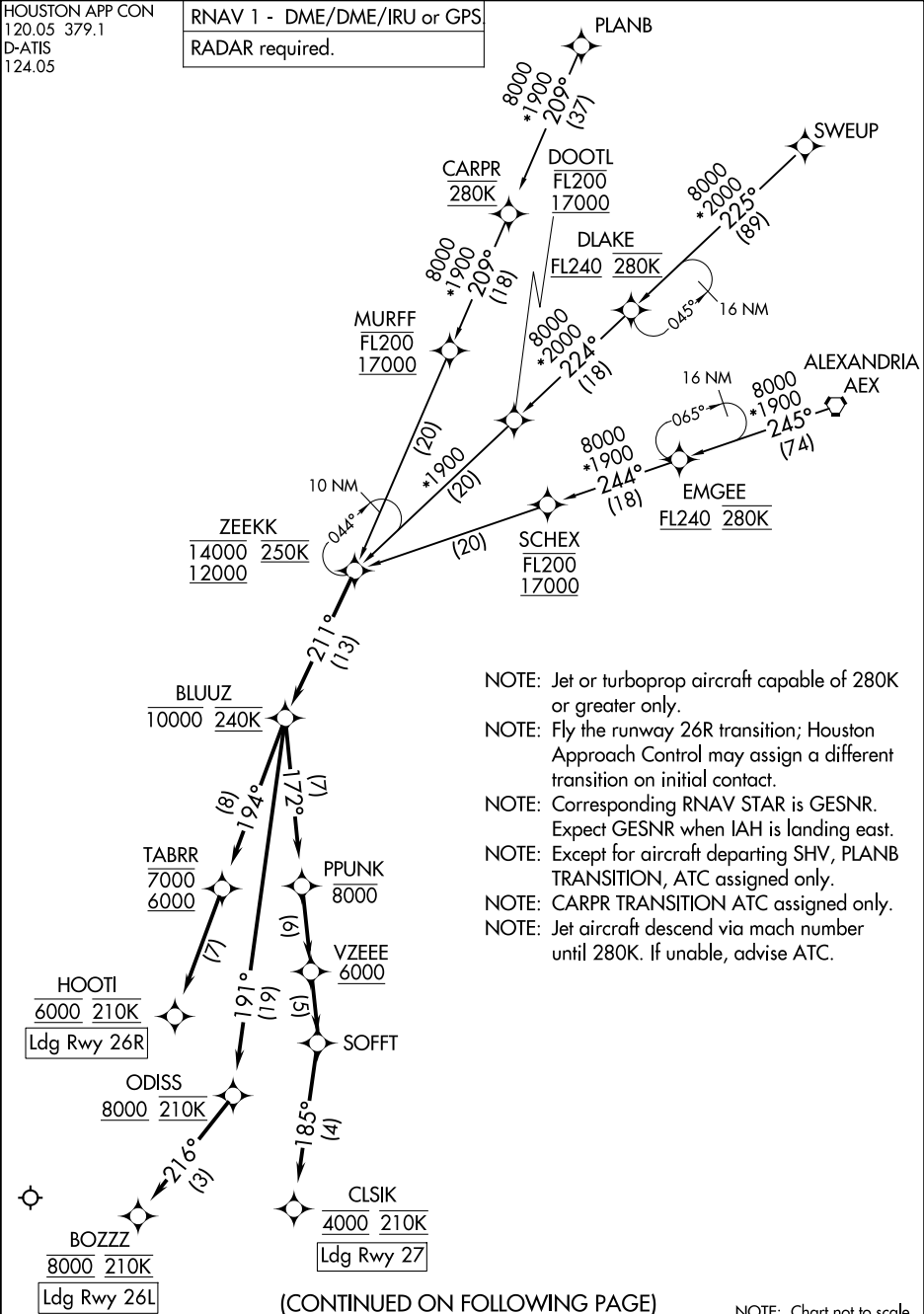


HOUSTON APP CON  
120.05 379.1  
D-ATIS  
124.05

RNAV 1 - DME/DME/IRU or GPS  
RADAR required.



- NOTE: Jet or turboprop aircraft capable of 280K or greater only.
- NOTE: Fly the runway 26R transition; Houston Approach Control may assign a different transition on initial contact.
- NOTE: Corresponding RNAV STAR is GESNR. Expect GESNR when IAH is landing east.
- NOTE: Except for aircraft departing SHV, PLANB TRANSITION, ATC assigned only.
- NOTE: CARPR TRANSITION ATC assigned only.
- NOTE: Jet aircraft descend via mach number until 280K. If unable, advise ATC.

NOTE: Chart not to scale.