

WAAS CH 72926 W09A	APP CRS 087°	Rwy Idg 10000 TDZE 91 Apt Elev 96
--	------------------------	--

RNAV (GPS) Z RWY 9

GEORGE BUSH INTCNL/HOUSTON (IAH)

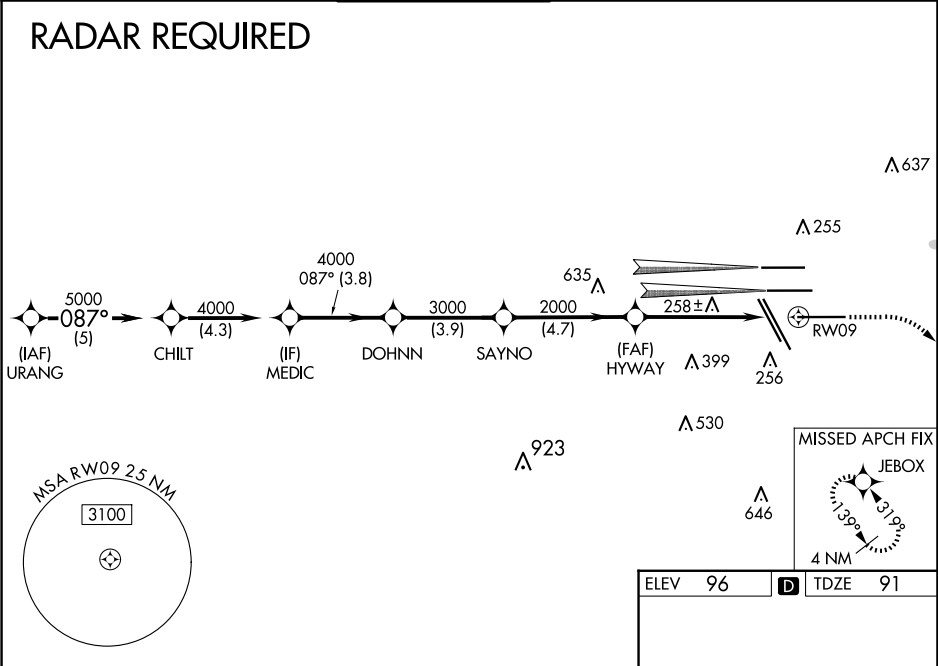
⚠ For uncompensated Baro-VNAV systems, LNAV/VNAV NA below -3°C (27°F) or above 54°C (130°F). For inop MALSR, increase LPV Cat E visibility to RVR 4000, LNAV/VNAV Cat E visibility to 1½ mile, and LNAV Cat C/D/E visibility to 1¾ mile. Simultaneous approach authorized with Rwy 8L/R. DME/DME RNP-0.3 NA. LNAV procedure NA during simultaneous operations. Use of FD or AP providing RNAV track guidance required during simultaneous operations.
** RVR 1800 authorized with use of FD or AP or HUD to DA.

MALSR

MISSED APPROACH: Climb to 580 then climbing right turn to 3000 direct JEBOX and hold.

D-ATIS 124.05	HOUSTON APP CON 120.05 379.1 EAST 124.35 316.15 WEST	HOUSTON TOWER 135.15 290.2	GND CON 118.575	CLNC DEL 128.1	CPDLC
-------------------------	--	--------------------------------------	---------------------------	--------------------------	-------

RADAR REQUIRED



VGSI and RNAV glidepath not coincident (VGSI Angle 3.00/TCH 71).

URANG CHILT MEDIC DOHNN SAYNO HYWAY RWY 09

5000 4000 4000 3000 2000 1000

GP 3.00° TCH 50

5 NM 4.3 NM 3.8 NM 3.9 NM 4.7 NM 4.5 NM 1.3 NM

CATEGORY A B C D E

LPV DA** 291/24 200 (200-½)

LNAV/VNAV DA 525/50 434 (500-1)

LNAV MDA 580/24 489 (500-½) 580/50 489 (500-1)

580 3000 JEBOX

*LNAV only.

1.3 NM to RWY 09

RWY 09

ELEV 96 TDZE 91

9000 X 150 26R 26L 27

9402 X 150 26R 26L 27

TWR 422 10000 X 150

1000 X 150 33L 33R

087°

TDZ/CL Rwy 8R, 8L, 15R, 26R, 26L, 27 and 33L

HIRL all Rwy