

WAAS CH 53626 W08B	APP CRS 087°	Rwy Idg TDZE 96 Apt Elev 96	9402
--	------------------------	---	-------------

RNAV (GPS) Z RWY 8R

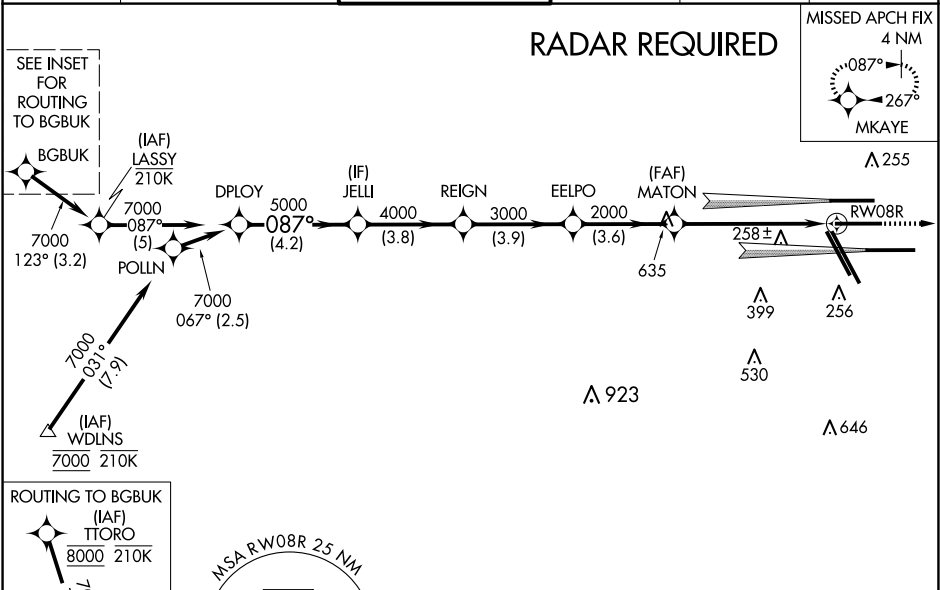
GEORGE BUSH INTCNL/HOUSTON (IAH)

▼ For uncompensated Baro-VNAV systems, LNAV/VNAV NA below -3°C (27°F) or above 54°C (130°F). For inop MALSR, increase LPV Cat E visibility to RVR 4000, LNAV/VNAV all Cats visibility to RVR 6000, and LNAV Cat C/D/E visibility to 1 $\frac{3}{8}$. Simultaneous approach authorized with Rwy 8L and Rwy 9. DME/DME RNP-0.3 NA. Use of FD or AP providing RNAV track guidance required during simultaneous operations. LNAV procedure NA during simultaneous operations.

MALSR

MISSED APPROACH:
Climb to 3000 direct MKAYE and hold.

D-ATIS 124.05	HOUSTON APP CON 120.05 379.1 EAST 124.35 316.15 WEST	HOUSTON TOWER 125.35 290.2	GND CON 118.575	CLNC DEL 128.1	CPDLC
-------------------------	--	--------------------------------------	---------------------------	--------------------------	-------



ELEV 96 TDZE 96

GP 3.00° TCH 55	7000	5000	4000	3000	2000	1.3 NM to RW08R
	4.2 NM	3.8 NM	3.9 NM	3.6 NM	4.5 NM	1.3 NM
CATEGORY	A	B	C	D	E	
LPV DA	296/18 200 (200-1/2)					
LNAV/VNAV DA	421/32 325 (400-5/8)					
LNAV MDA	580/24	484 (500-1/2)	580/50	484 (500-1)		

HIRL all Rwy's
TDZ/CL Rwy's 8L/R, 15R, 26L/26R, 27 and 33L