

WAAS CH 77826 W08A	APP CRS 087°	Rwy Idg 9000 TDZE 95 Apt Elev 96
--	------------------------	---

RNAV (GPS) Z RWY 8L
GEORGE BUSH INTCNL/HOUSTON (IAH)

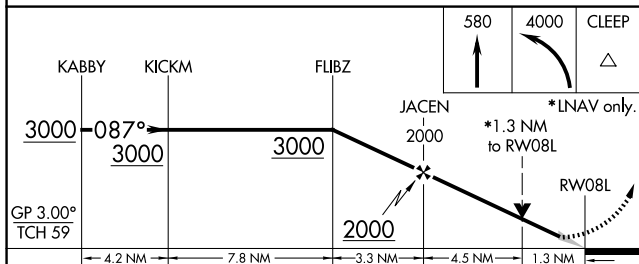
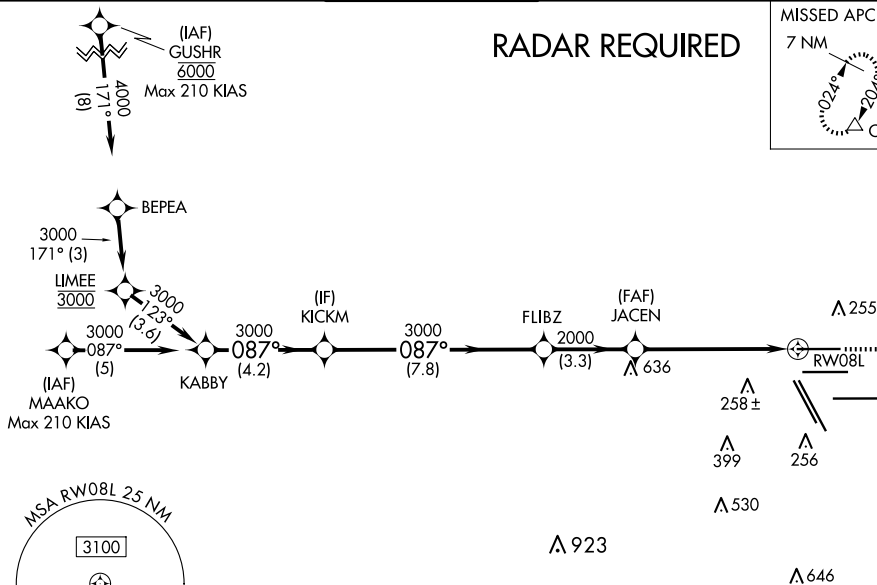
▼ For uncompensated Baro-VNAV systems, LNAV/VNAV NA below -3°C (27°F) or above 54°C (130°F). For inop ALSF, increase LPV Cat E visibility to RVR 4000, LNAV/VNAV Cat E visibility to 1¼, and LNAV Cat C/D/E visibility to 1%. Simultaneous approach authorized with Rwy 8R and Rwy 9. DME/DME RNP-0.3 NA. Use of FD or AP providing RNAV track guidance required during simultaneous operations. LNAV procedure NA during simultaneous operations.

ALSF-2



MISSED APPROACH: Climb to 580 then climbing left turn to 4000 direct CLEEP and hold.

D-ATIS 124.05	HOUSTON APP CON 120.05 379.1 EAST 124.35 316.15 WEST	HOUSTON TOWER 120.72 290.2	GND CON 121.7	CLNC DEL 128.1	CPDLC
-------------------------	--	--------------------------------------	-------------------------	--------------------------	-------



CATEGORY	A	B	C	D	E
LPV DA	295/18 200 (200-½)				
LNAV/ VNAV DA	486/40 391 (400-¾)				
LNAV MDA	580/24	485 (500-½)	580/50	485 (500-1)	

