

WAAS CH 97726 W26A	APP CRS 267°	Rwy Idg 9000 TDZE 96 Apt Elev 96
--	------------------------	---

RNAV (GPS) Z RWY 26R
GEORGE BUSH INTCNL/HOUSTON (IAH)

▼ For uncompensated Baro-VNAV systems, LNAV/VNAV NA below -3°C (27°F) or above 54°C (130°F). For inop ALSF, increase LPV Cat E visibility to RVR 4000, LNAV/VNAV all Cts visibility to 1/4, and LNAV Cat C/D/E visibility to 1/2. DME/DME RNP-0.3 NA. Simultaneous approach authorized with Rwy 26L and Rwy 27. LNAV procedure NA during simultaneous operations. Use of FD or AP providing RNAV track guidance required during simultaneous operations.

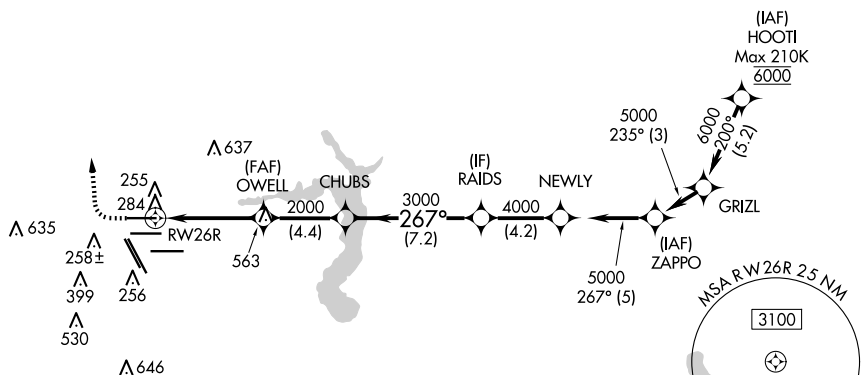
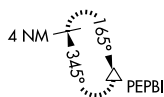
ALSF-2



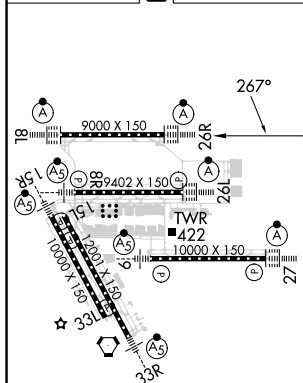
MISSED APPROACH: Climb to 600 then climbing right turn to 3000 direct PEPBI and hold.

D-ATIS 124.05	HOUSTON APP CON 120.05 379.1 EAST 124.35 316.15 WEST	HOUSTON TOWER 120.72 290.2	GND CON 121.7	CLNC DEL 128.1	CPDLC
-------------------------	--	--------------------------------------	-------------------------	--------------------------	-------

RADAR REQUIRED



ELEV 96	D	TDZE 96
---------	----------	---------



TDZ/CL Rwy's 8R, 8L, 15R, 26R, 26L,
27 and 33L
HURL all Rwy's

