

APP CRS	Rwy Idg	10000
087°	TDZE	91
	Apt Elev	96

RNAV (RNP) Y RWY 9

GEORGE BUSH INTCNL/HOUSTON (IAH)

▽

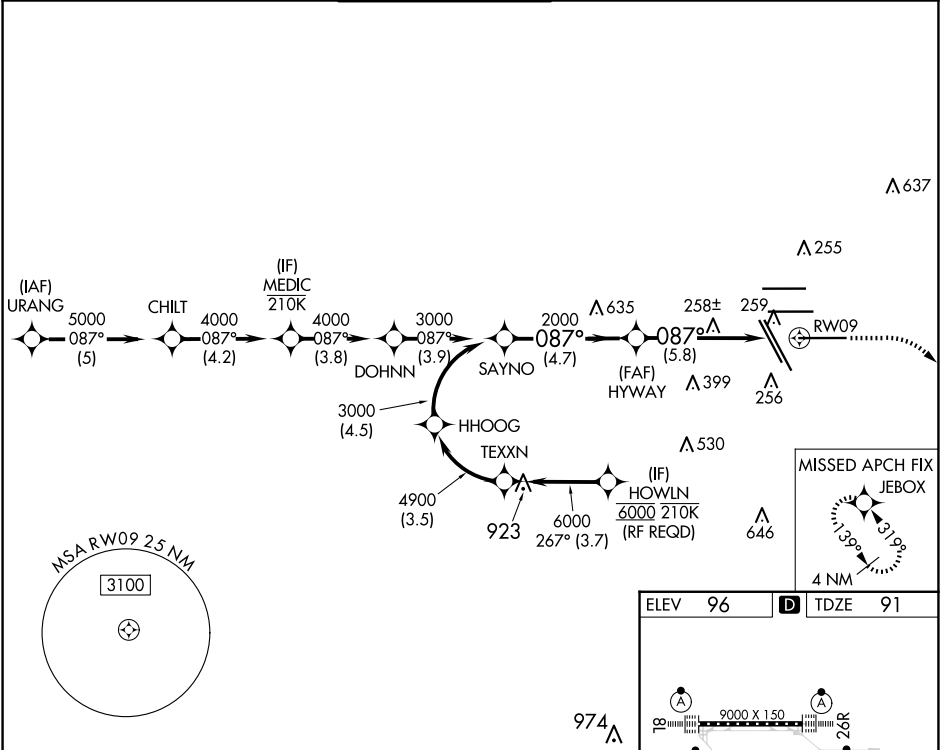
For uncompensated Baro-VNAV systems, procedure NA below -3°C (27°F) or above 54°C (130°F). GPS required. For inop MALSR, increase all Cats visibility to 1½ mile. Simultaneous approach authorized. Use of FD or AP providing RNAV track guidance required during simultaneous operations.

MALSR

AS

MISSED APPROACH: Climb to 580 then climbing right turn to 3000 direct JEBBOX and hold.

D-ATIS	HOUSTON APP CON	HOUSTON TOWER	GND CON	CLNC DEL	CPDLC
124.05	120.05 379.1 EAST 124.35 316.15 WEST	135.15 290.2	118.575	128.1	



VGSI and RNAV glidepath not coincident (VGSI Angle 3.00/TCH 71).

580

3000

JEBBOX

SAYNO

HYWAY

GP 3.00° TCH 50

3000

2000

2000

4.7 NM

5.8 NM

RWY 9

ELEV 96

TDZE 91

974

9000 X 150

26K

9402 X 150

26L

422

1000 X 150

33L

33R

1000 X 150

27

CATEGORY

A

B

C

D

RNP 0.30 DA

516/49 425 (500-1)

AUTHORIZATION REQUIRED

TDZ/CL Rwy's 8R, 8L, 15R, 26R, 26L, 27 and 33L

HIRL all Rwy's