

HOUSTON, TEXAS

AL-5461 (FAA)

24305

APP CRS <b>267°</b>	Rwy Idg <b>10000</b> TDZE <b>86</b> Apt Elev <b>96</b>
------------------------	--

RNAV (RNP) Y RWY 27  
GEORGE BUSH INTCNL/HOUSTON (IAH)

RNP AR APCH - GPS.

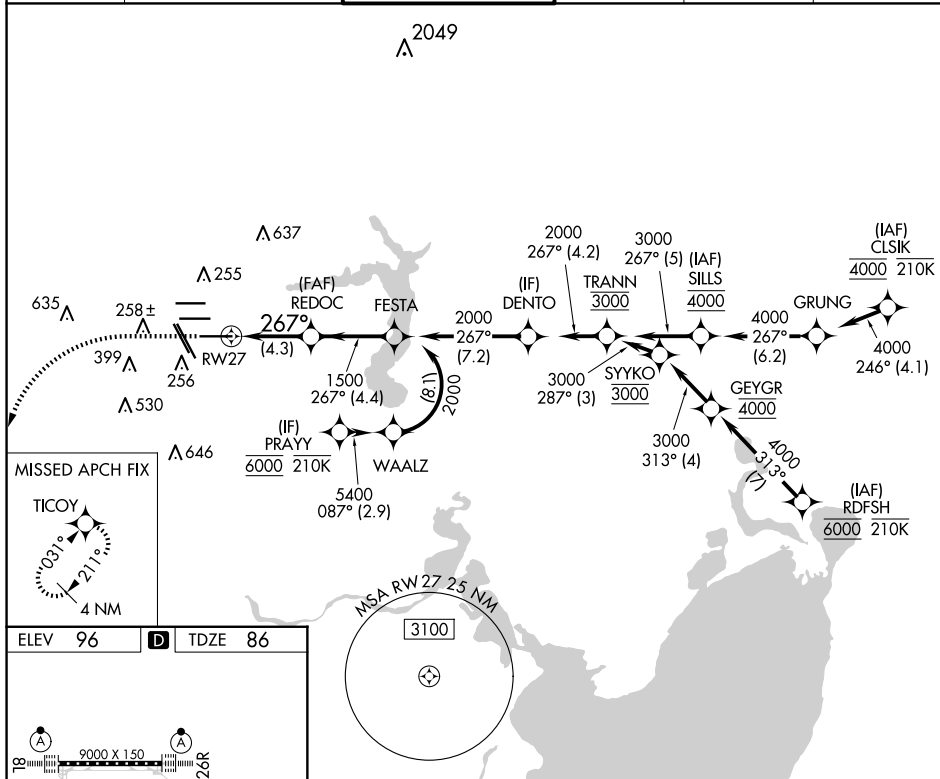
**T** Simultaneous approach authorized. Use of FD or AP required during simultaneous operations. For uncompensated Baro-VNAV systems, procedure NA below -2°C or above 54°C. For inop ALS, increase RNP 0.30 all Cats visibility to RVR 4500.

ALSF-2

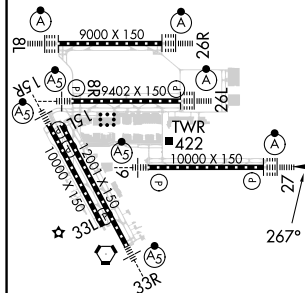


**MISSED APPROACH:** Climb to 560 then climbing left turn to 3000 direct TICOY and hold.




D-ATIS <b>124.05</b>	HOUSTON APP CON <b>120.05 379.1</b> EAST <b>124.35 316.15</b> WEST	HOUSTON TOWER <b>135.15 290.2</b>	GND CON <b>118.575</b>	CLNC DEL <b>128.1</b>	CPDLC
-------------------------	--	--------------------------------------	---------------------------	--------------------------	-------



ELEV 96	<b>D</b>	TDZE 86
---------	----------	---------

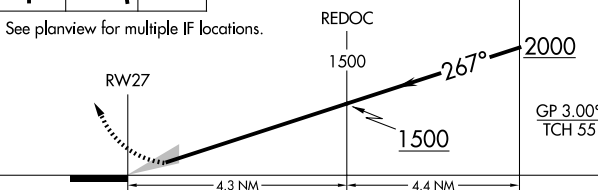


TDZ/CL Rwy's 8L, 8R, 15R, 26R, 26L,  
27 and 33L  
HIRL all Rwy's

560	3000	TICOY
		

VGSI and RNAV glidepath not coincident (VGSI Angle 3.00/TCH 70).

See planview for multiple IF locations.



CATEGORY	A	B	C	D
RNP 0.30 DA		380/24	294 (300-½)	

**AUTHORIZATION REQUIRED**

HOUSTON, TEXAS  
Amdt 3 19MAY22

GEORGE BUSH INTCNL/HOUSTON (IAH)

29°59'N-95°20'W

RNAV (RNP) Y RWY 27

SC-5, 10 JUL 2025 to 07 AUG 2025