

HOUSTON, TEXAS

AL-5461 (FAA)

24305

APP CRS	Rwy Idg	9000
267°	TDZE	96
	Apt Elev	96

RNAV (RNP) Y RWY 26R
GEORGE BUSH INTCNL/HOUSTON (IAH)

GEORGE BUSH INTCNL/HOUSTON (T A H)

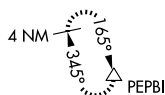
T For uncompensated Baro-VNAV systems, procedure NA below -3°C (27°F) or above 54°C (130°F). GPS required. Simultaneous approach authorized. For inop ALS, increase RNP 0.11 all Cats visibility to RVR 5000 and increase RNP 0.15 all Cats visibility to 1¼ Sm. Use of FD or AP providing RNAV track guidance required during simultaneous operations.

ALSF-2

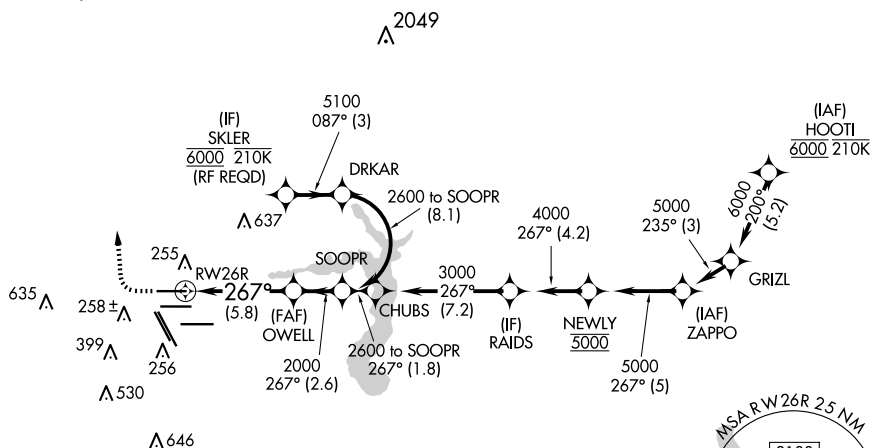


MISSED APPROACH: Climb to 600 then climbing right turn to 3000 direct PEPBI and hold.

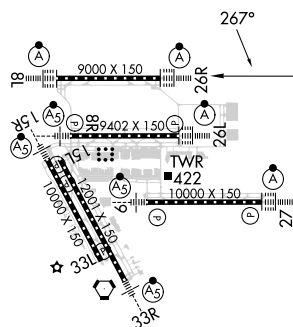
D-ATIS 124.05	HOUSTON APP CON 120.05 379.1 EAST 124.35 316.15 WEST	HOUSTON TOWER 120.72 290.2	GND CON 121.7	CLNC DEL 128.1	CPDLC
-------------------------	--	--------------------------------------	-------------------------	--------------------------	-------



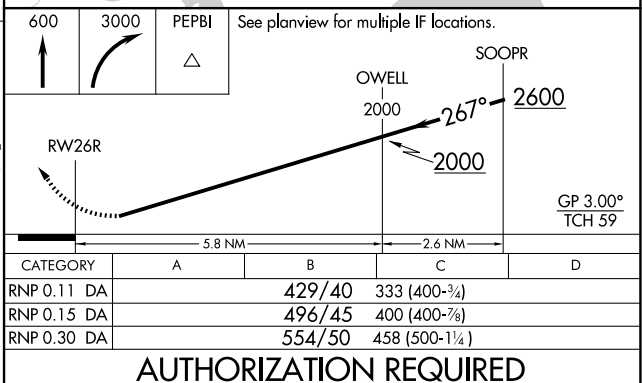
RADAR REQUIRED



ELEV 96	D	TDZE 96
---------	----------	---------



TDZ/CL Rwy 8R, 8L, 15R, 26R, 26L,
27 and 33L
HIRL qll Rwy



HOUSTON, TEXAS

Orig-D 13SEP18

GEORGE BUSH INTCNL/HOUSTON (IAH)

29°59'N-95°20'W

RNAV (RNP) Y RWY 26R

SC-5, 10 JUL 2025 to 07 AUG 2025

SC-5, 10 JUL 2025 to 07 AUG 2025