

APP CRS  
**267°**

Rwy Idg  
TDZE  
Apt Elev

**9402**  
**95**  
**96**

**RNAV (RNP) Y RWY 26L**

GEORGE BUSH INTCNL/HOUSTON (IAH)

RNP AR APCH - GPS.

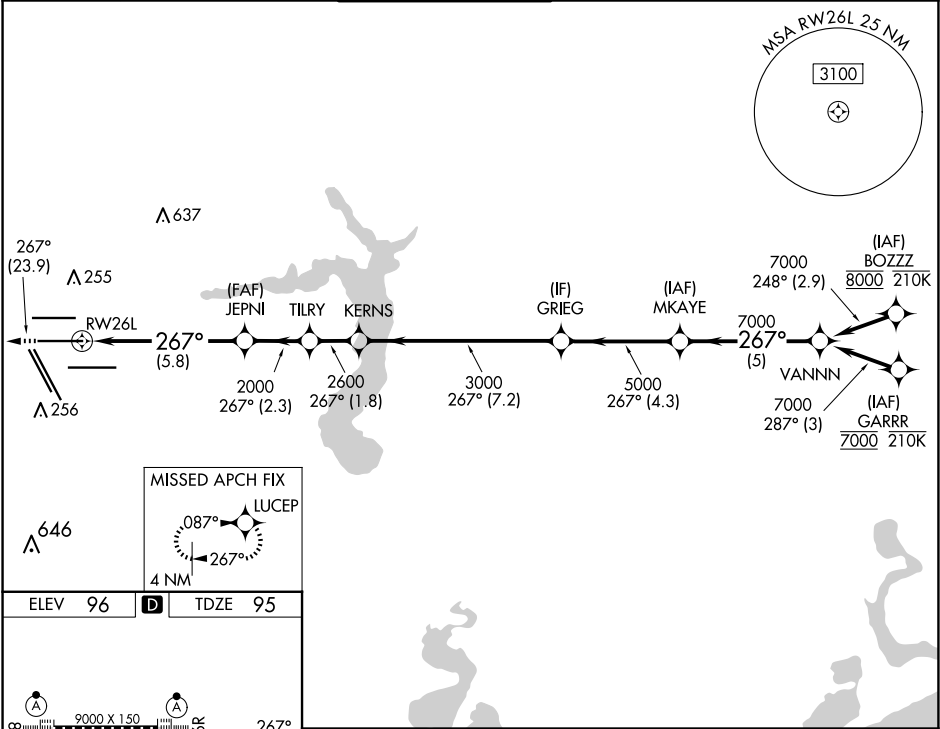
▼

For uncompensated Baro-VNAV systems, procedure NA below -3°C or above 54°C. Simultaneous approach authorized. For inop ALS, increase RNP 0.13 all Cats visibility to RVR 5100, and RNP 0.30 all Cats visibility to 1½ SM.

ALSF-2

MISSED APPROACH: Climb to 3000 on track 267° to LUCEP and hold.

D-ATIS <b>124.05</b>	HOUSTON APP CON <b>120.05 379.1 EAST</b> <b>124.35 316.15 WEST</b>	HOUSTON TOWER <b>125.35 290.2</b>	GND CON <b>118.575</b>	CLNC DEL <b>128.1</b>	CPDLC
-------------------------	--------------------------------------------------------------------------	--------------------------------------	---------------------------	--------------------------	-------



ELEV 96

**D**

TDZE 95

3000

LUCEP

VGSI and RNAV glidepath not coincident (VGSI Angle 3.00/TCH 71).

CATEGORY	A	B	C	D
RNP 0.13 DA	414/40	319 (400-¾)		
RNP 0.30 DA	549/55	454 (500-1)		

AUTHORIZATION REQUIRED

HOUSTON, TEXAS

Orig-E 19MAY22

29°59'N-95°20'W

GEORGE BUSH INTCNL/HOUSTON (IAH)

**RNAV (RNP) Y RWY 26L**