

WAAS CH 97599 W15A	APP CRS 149°	Rwy Idg 10000 TDZE 95 Apt Elev 96
--	------------------------	--

RNAV (GPS) RWY 15R

GEORGE BUSH INTCNL/HOUSTON (IAH)

RADAR required for procedure entry.
RNP APCH.

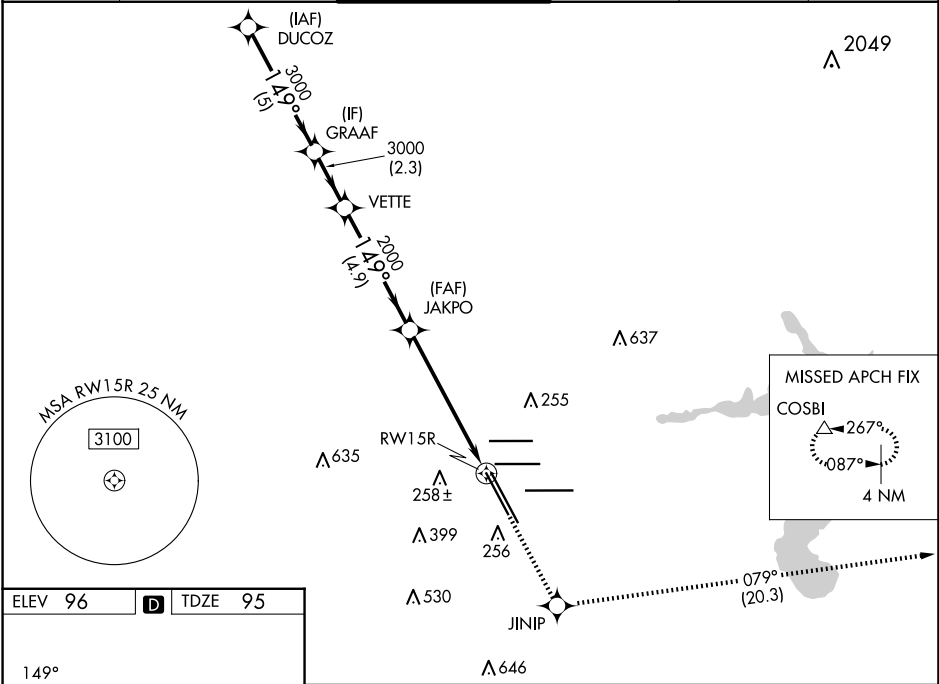
T

For uncompensated Baro-VNAV systems, LNAV/VNAV NA below -3°C or above 54°C. For inop ALS, increase LPV Cat E visibility to RVR 4000, LNAV/VNAV all Cats visibility to RVR 5500, and LNAV Cat C/D/E visibility to 1 3⁄8 SM.

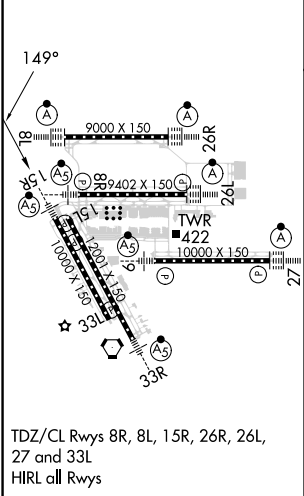
MALSR

MISSED APPROACH: Climb to 2000 direct JINIP and left turn on track 079° to COSBI and hold.

D-ATIS 124.05	HOUSTON APP CON 120.05 379.1 EAST 124.35 316.15 WEST	HOUSTON TOWER 127.3 288.25	GND CON 121.7	CLNC DEL 128.1	CPDLC
-------------------------	--	--------------------------------------	-------------------------	--------------------------	-------



ELEV 96	D	TDZE 95
----------------	----------	----------------



HOUSTON, TEXAS
Amdt 2C 30JAN20

VGSI and RNAV glidepath not coincident (VGSI Angle 3.00/TCH 71).					
<div>DUCOZ GRAAF VETTE JAKPO COSBI</div> <div>3000 — 149° — 3000 3000 2000 2000 079°</div> <div>GP 3.00° TCH 54</div> <div>5 NM 2.3 NM 4.9 NM 4.5 NM 1.3 NM</div>					
CATEGORY	A	B	C	D	E
LPV DA	295/18		200 (200-½)		
LNAV/VNAV DA	460/35		365 (400-¾)		
LNAV MDA	580/24	485 (500-½)	580/50	485 (500-1)	

GEORGE BUSH INTCNL/HOUSTON (IAH)

RNAV (GPS) RWY 15R

29°59'N-95°20'W

SC-5, 10 JUL 2025 to 07 AUG 2025

SC-5, 10 JUL 2025 to 07 AUG 2025