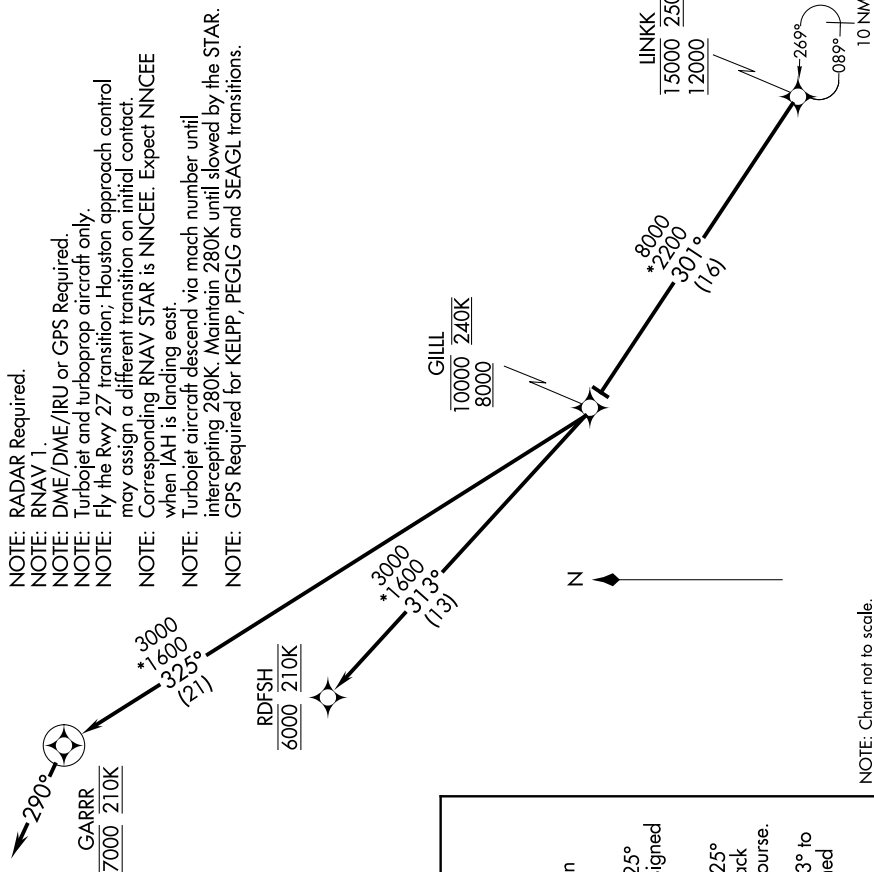


LINKK ONE ARRIVAL (RNAV) Arrival Routes

HOUSTON, TEXAS



NOTE: Chart not to scale.

ARRIVAL ROUTE DESCRIPTION

From LINKK on track 301° to cross GILL between 8000 and 10000 and at 240K.

LANDING RUNWAY 26L: From GILL on track 325° to cross GARRR at 7000 and at 210K. Expect assigned instrument approach RWY 26L.

LANDING RUNWAY 26R: From GILL on track 325° to cross GARRR at 7000 and at 210K, then on track 290° at 210K. Expect vectors to final approach course

LANDING RUNWAY 27: From GILL on track 313° to cross RDFSH at 6000 and at 210K. Expect assigned instrument approach RWY 27.

HOUSTON, TEXAS