

HOUSTON, TEXAS

AL-5461 (FAA)

2430.5

LOC/DME I-IAH <u>109.7</u> Chan 34	APP CRS 087°	Rwy Idg 9402 TDZE 95 Apt Elev 96
--	------------------------	---

ILS or LOC RWY 8R
GEORGE BUSH INTCNL/HOUSTON (IAH)

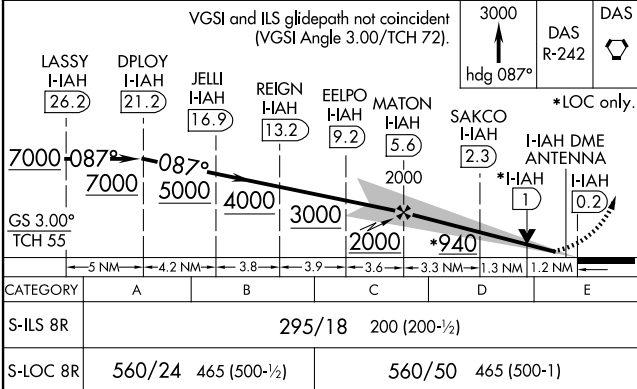
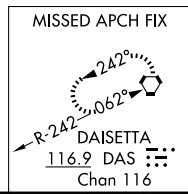
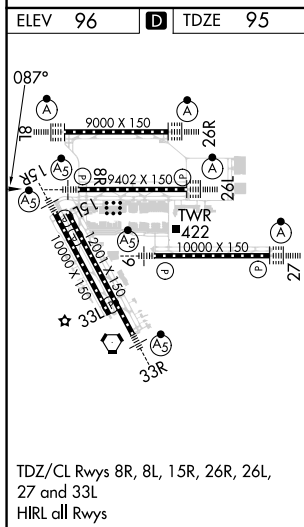
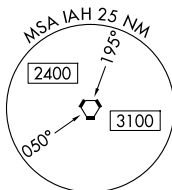
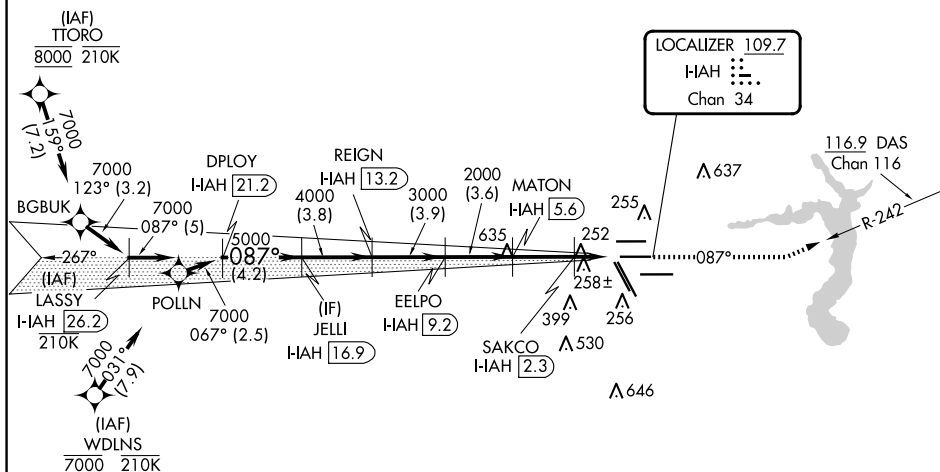
RNAV 1-GPS or RADAR required for procedure entry, DME.

T Simultaneous approach authorized. For inop ALS, increase S-LOC 8R Cat C/D/E visibility to $1\frac{3}{8}$ SM. For inop ALS, increase S-ILS 8R Cat E visibility to RVR 4000.

MALSR

MISSED APPROACH: Climb to 3000 on heading 087° and on DAS VORTAC R-242 to DAS VORTAC and hold.

D-ATIS 124.05	HOUSTON APP CON 120.05 379.1 EAST 124.35 316.15 WEST	HOUSTON TOWER 125.35 290.2	GND CON 118.575	CLNC DEL 128.1	CPDLC ▲ 2049
-------------------------	--	--------------------------------------	---------------------------	--------------------------	-----------------



HOUSTON, TEXAS
Amdt 26A 10OCT19

GEORGE BUSH INTCNTL/HOUSTON (IAH)
ILS or LOC RWY 8R

29°59'N-95°20'W

SC-5, 10 JUL 2025 to 07 AUG 2025

SC-5, 10 JUL 2025 to 07 AUG 2025