

LOC/DME I-GHI <b>110.9</b> Chan <b>46</b>	APP CRS <b>267°</b>	Rwy Idg <b>10000</b> TDZE <b>86</b> Apt Elev <b>96</b>
-------------------------------------------------	------------------------	--------------------------------------------------------------

ILS or LOC RWY 27  
GEORGE BUSH INTCNL/HOUSTON (IAH)

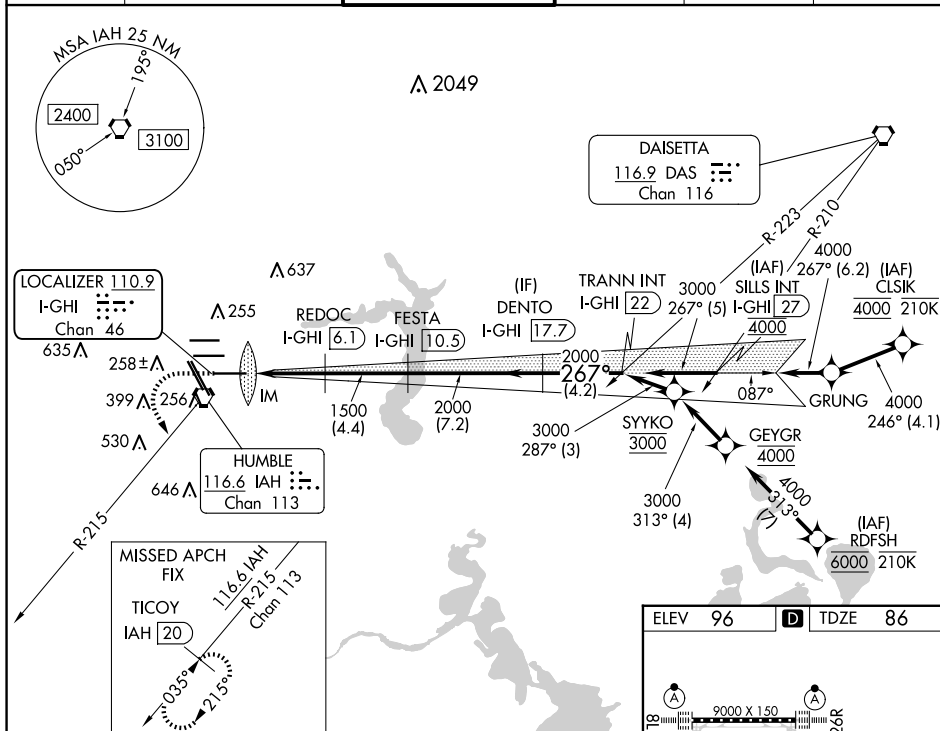
RNAV 1-GPS or RADAR required for procedure entry.  
DME required.

**T** Simultaneous approach authorized. Use of FD or AP required during simultaneous operations. For inop ALS, increase S-ILS 27 Cat E visibility to RVR 4000 and S-LOC 27 Cat C-E visibility to  $1\frac{3}{8}$  SM.

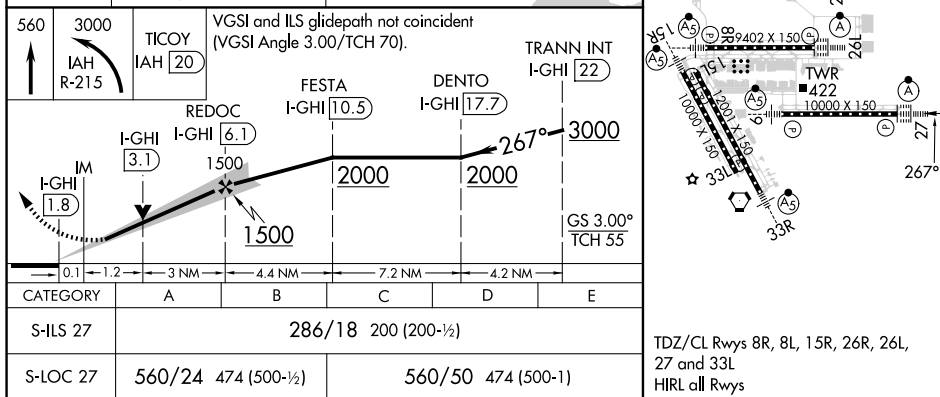
ALSF-2

**MISSED APPROACH:** Climb to 560 then climbing left turn to 3000 on IAH VORTAC R-215 to TICOY/IAH 20 DME and hold.

D-ATIS <b>124.05</b>	HOUSTON APP CON <b>120.05 379.1</b> EAST <b>124.35 316.15</b> WEST	HOUSTON TOWER <b>135.15 290.2</b>	GND CON <b>118.575</b>	CLNC DEL <b>128.1</b>	CPDLC
-------------------------	--------------------------------------------------------------------------	--------------------------------------	---------------------------	--------------------------	-------



SC-5, 10 JUL 2025 to 07 AUG 2025



HOUSTON, TEXAS  
Amdt 11D 12AUG21

GEORGE BUSH INTCNTL/HOUSTON (IAH)  
ILS or LOC RWY 27

29°59'N-95°20'W