

LOC/DME I-JYV 109.7 Chan 34	APP CRS 267°	Rwy Idg 9402 TDZE 95 Apt Elev 96
---	------------------------	---

ILS or LOC RWY 26L
GEORGE BUSH INTCNTL/HOUSTON (IAH)

DME required. From BOZZZ, GARRR: RNAV 1-GPS required.

T Simultaneous approach authorized with Rwy 26R and Rwy 27. For inop ALS, increase S-ILS 26L Cat E visibility to RVR 4000, S-LOC 26L Cat C/D/E visibility to RVR 5000.

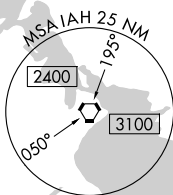
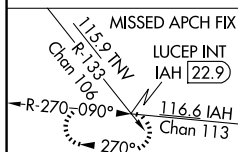
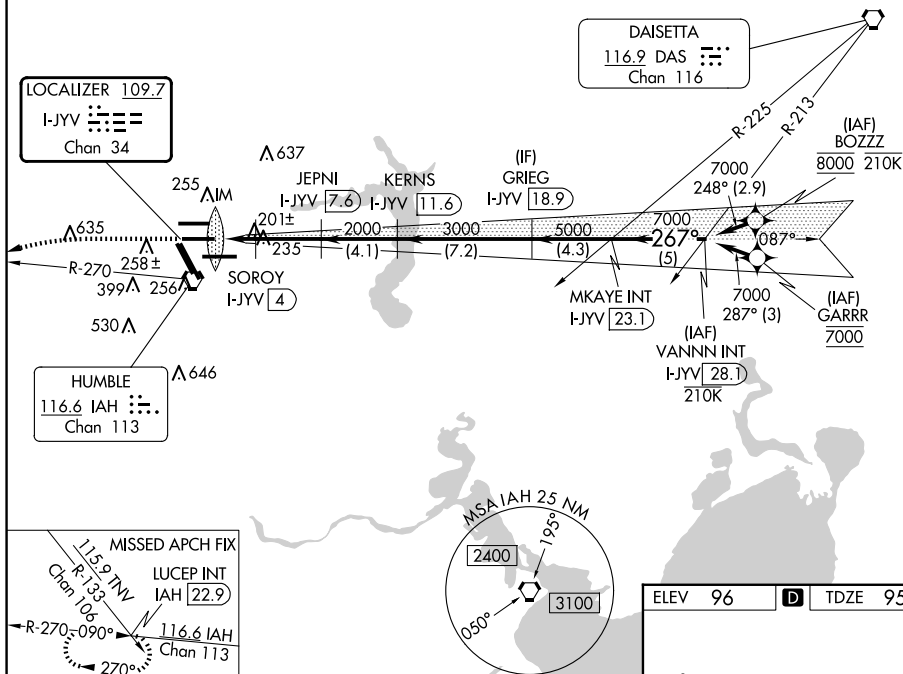
ALSF-2



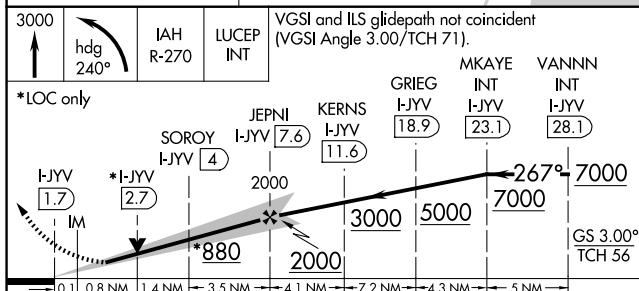
MISSED APPROACH: Climb to 3000 then left turn heading 240° and IAH VORTAC R-270 to LUCEP INT/IAH 22.9 DME and hold.

D-ATIS 124.05	HOUSTON APP CON 120.05 379.1 EAST 124.35 316.15 WEST	HOUSTON TOWER 125.35 290.2	GND CON 118.575	CLINC DEL 128.1	CPDLC
-------------------------	--	--------------------------------------	---------------------------	---------------------------	-------

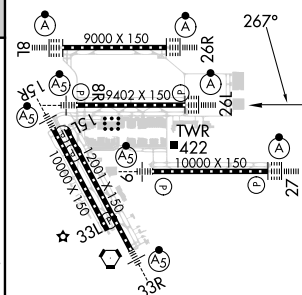
A 2049



ELEV 96	D	TDZE 95
---------	----------	---------



CATEGORY	A	B	C	D	E
S-ILS 26L	295/18 200 (200-½)				
S-LOC 26L	460/24 365 (400-½)	460/35 365 (400-¾)			



TDZ/CL Rwy's 8R, 8L, 15R, 26R, 26L,
27 and 33L
HURL all Rwy's

FAF to MAP 5.8 NM

Knots	60	90	120	150	180
Min:Sec	5:48	3:52	2:54	2:19	1:56