

LOC I-LKM <b>111.15</b>	APP CRS <b>149°</b>	Rwy Idg <b>10000</b> TDZE <b>95</b> Apt Elev <b>96</b>
----------------------------	------------------------	--

## ILS or LOC RWY 15R

GEORGE BUSH INTCNTL/HOUSTON (IAH)

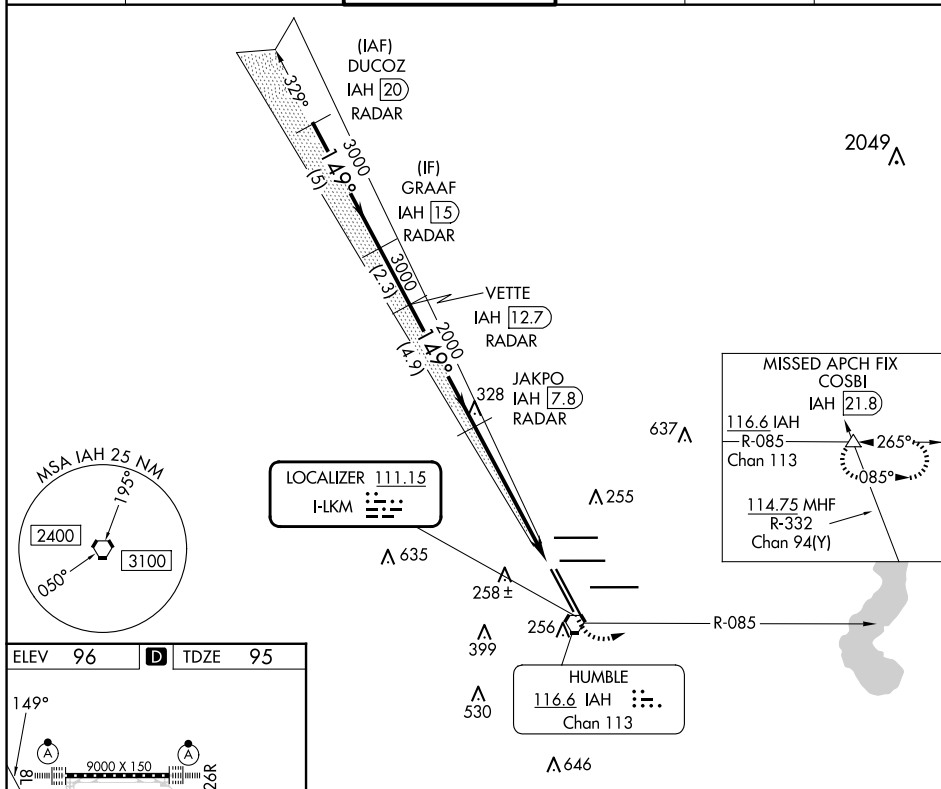
RADAR required for procedure entry. DME or RADAR required.

**T** DME from IAH VORTAC. Simultaneous reception of I-LKM and IAH DME required. For inop ALS, increase S-ILS 15R Cat E visibility to RVR 4000, and S-LOC 15R Cat C/D/E visibility to 1 $\frac{3}{8}$  SM.

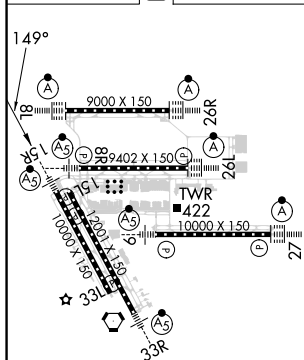


**MISSED APPROACH:** Climb to 1000 then climbing left turn to 2000 on IAH VORTAC R-085 to COSBI INT/IAH 21.8 DME and hold.

D-ATIS <b>124.05</b>	HOUSTON APP CON <b>120.05 379.1</b> EAST <b>124.35 316.15</b> WEST	HOUSTON TOWER <b>127.3 288.25</b>	GND CON <b>121.7</b>	CLNC DEL <b>128.1</b>	CPDLC
-------------------------	--	--------------------------------------	-------------------------	--------------------------	-------



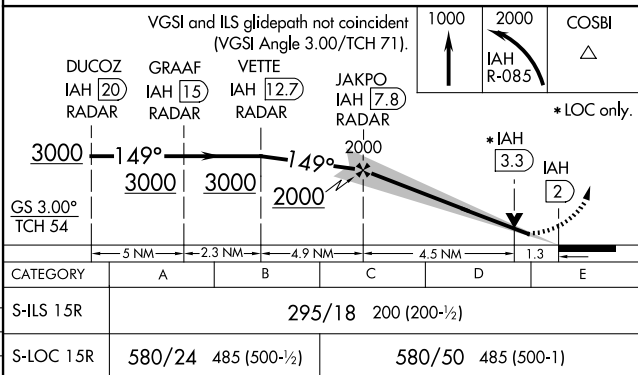
ELEV	96	<b>D</b>	TDZE	95
------	----	----------	------	----



TDZ/CL Rwy's 8R, 8L, 15R, 26R, 26L,  
27 and 33L  
HIRL all Rwy's

FAF to MAP 5.8 NM

Knots	60	90	120	150	180
Min:Sec	5:48	3:52	2:54	2:19	1:56



HOUSTON, TEXAS  
Amdt 2B 25APR19

GEORGE BUSH INTCNLT/HOUSTON (T A H)

29°59'N-95°20'W

## ILS or LOC RWY 15R