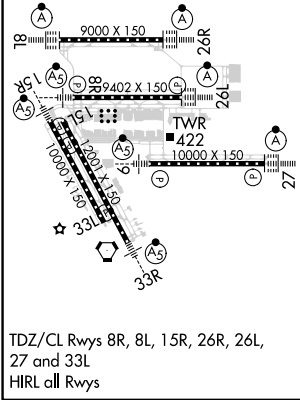
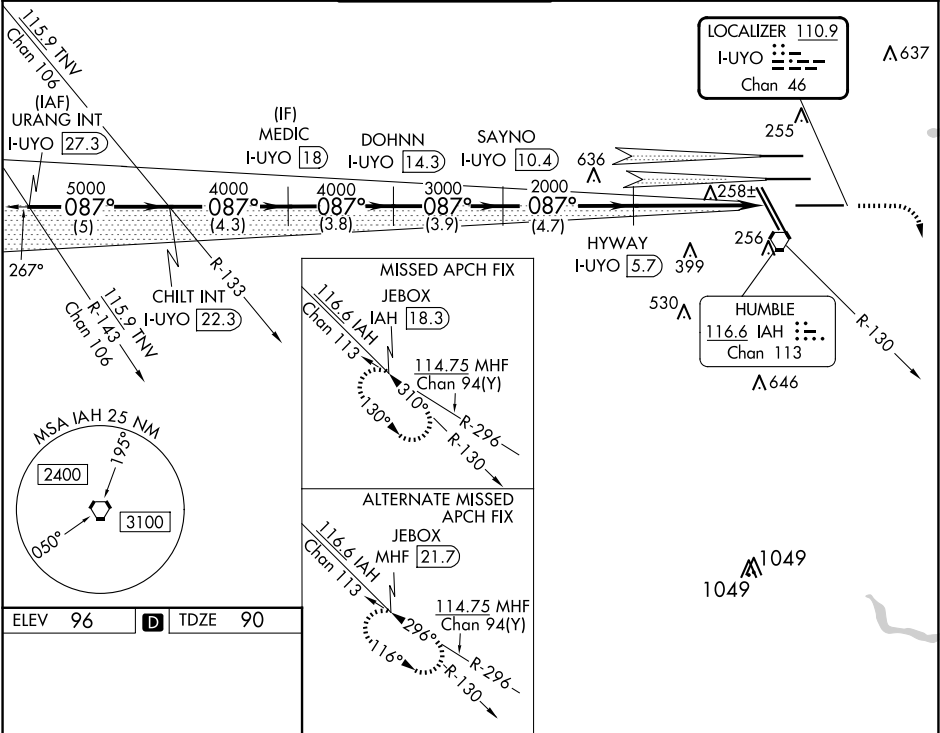


| | | | |
|---------------|---------|----------|-------|
| LOC/DME I-UYO | APP CRS | Rwy Idg | 10000 |
| 110.9 | 087° | TDZE | 90 |
| Chan 46 | | Apt Elev | 96 |

ILS RWY 9 (SA CAT I & II)
GEORGE BUSH INTCNL/HOUSTON (IAH)

| | | |
|--|-------|--|
| DME required. RADAR required for procedure entry. | MALSR | MISSED APPROACH: Climb to 580 then climbing right turn to 3000 on IAH VORTAC R-130 to JEBOX/IAH 18.3 DME and hold. |
| Simultaneous approach authorized with Rwy 8L/R. SA CAT I: Requires specific OPSPEC, MSPEC, or LOA approval and use of AUTOLAND or HUD to touchdown. SA CAT II: Reduced lighting: requires specific OPSPEC, MSPEC, or LOA approval and use of AUTOLAND or HUD to touchdown. | | |

| | | | | | |
|------------------|--|-------------------------------|--------------------|-------------------|-------|
| D-ATIS 124.05 | HOUSTON APP CON 120.05 379.1 EAST 124.35 316.15 WEST | HOUSTON TOWER 135.15 290.2 | GND CON 118.575 | CLNC DEL 128.1 | CPDLC |
|------------------|--|-------------------------------|--------------------|-------------------|-------|



| | | | | | | |
|--|---|----------------|------------------|------------------|-----------------|----------|
| URANG INT I-UYO 27.3 | CHILT INT I-UYO 22.3 | MEDIC I-UYO 18 | DOHNN I-UYO 14.3 | SAYNO I-UYO 10.4 | HYWAY I-UYO 5.7 | JEBOX |
| 5000 | 5000 | 4000 | 4000 | 3000 | 2000 | 580 3000 |
| GS 3.00° | VGSI and ILS glidepath not coincident (VGSI Angle 3.00/TCH 71.) | | | | | |
| TCH 50 | | | | | | |
| 5 NM | 4.3 NM | 3.8 NM | 3.9 NM | 4.7 NM | 5.8 NM | 10651 |
| CATEGORY | A | B | C | D | | |
| S-ILS 9 | SA CAT I RA 148/14 | 150 | DA 240 | | | |
| S-ILS 9 | SA CAT II RA 98/12 | 100 | DA 190 | | | |
| SA CATEGORY I and II ILS SPECIAL AIRCREW & AIRCRAFT CERTIFICATION REQUIRED | | | | | | |

SC-5, 10 JUL 2025 to 07 AUG 2025

SC-5, 10 JUL 2025 to 07 AUG 2025