

LOC/DME I-IAH 109.7 Chan 34	APP CRS 087°	Rwy Idg 9402 TDZE 95 Apt Elev 96
---	------------------------	---

ILS RWY 8R (SA CAT I & II)

GEORGE BUSH INTCNTL/HOUSTON (IAH)

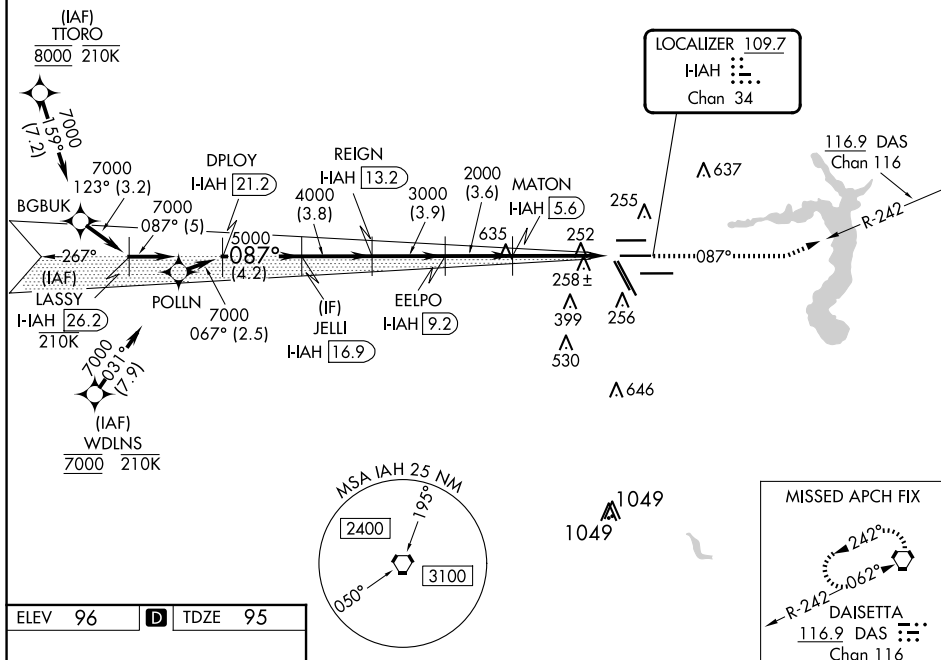
RNAV 1-GPS or RADAR required for procedure entry, DME.

MALSR

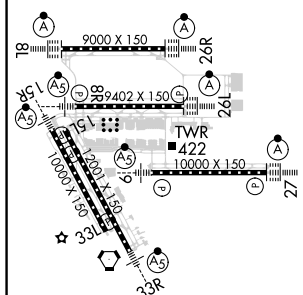
MISSED APPROACH: Climb to 3000 on heading 087° and on DAS VORTAC R-242 to DAS VORTAC and hold.

T MSPEC, or LOA approval and use of HUD to DH. SA CAT II: Reduced lighting: requires specific OPSPEC, MSPEC, or LOA approval and use of autoland or HUD to touchdown.

D-ATIS 124.05	HOUSTON APP CON 120.05 379.1 EAST 124.35 316.15 WEST	HOUSTON TOWER 125.35 290.2	GND CON 118.575	CLNC DEL 128.1	CPDLC ▲ 2049
-------------------------	--	--------------------------------------	---------------------------	--------------------------	-----------------



ELEV 96	D	TDZE 95
---------	----------	---------



TDZ/CL Rwy 8R, 8L, 15R, 26R, 26L,
27 and 33L
HIRL qll Rwy

HOUSTON, TEXAS

Amdt 26A 10OCT19

GEORGE BUSH INTCNTL/HOUSTON (IAH)

29°59'N-95°20'W

ILS RWY 8R (SA CAT I & II)

SC-5, 10 JUL 2025 to 07 AUG 2025

SC-5, 10 JUL 2025 to 07 AUG 2025

**SA CATEGORY I and II ILS SPECIAL AIRCREW
& AIRCRAFT CERTIFICATION REQUIRED**