

LOC/DME I-BZU

111.55

APP CRS

087°

Rwy Idg

9000

TDZE

94

Chan

52 (Y)

Apt Elev

96

ILS RWY 8L (SA CAT I)

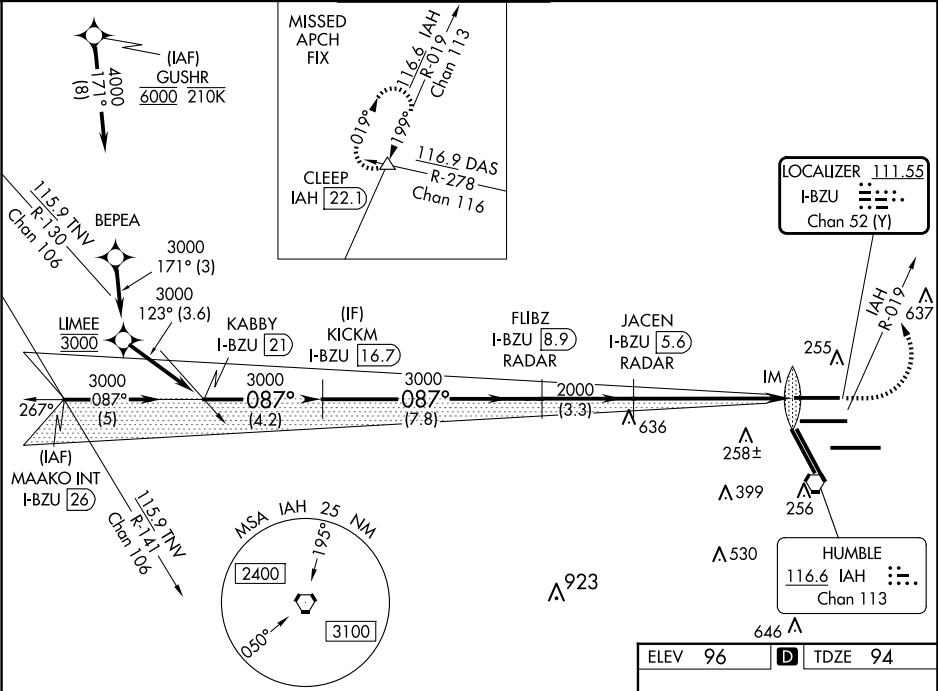
GEORGE BUSH INTCNL/HOUSTON (IAH)

DME required. From GUSHR: RNAV 1-GPS required.

ALSIF-2

MISSED APPROACH: Climb to 600 then climbing left turn to 4000 on IAH VORTAC R-019 to CLEEP INT/IAH 22.1 DME and hold.

ATIS 124.05	HOUSTON APP CON 120.05 379.1 EAST 124.35 316.15 WEST	HOUSTON TOWER 120.725 290.2	GND CON 118.575	CLNC DEL 128.1	CPDLC
----------------	--	--------------------------------	--------------------	-------------------	-------



600

4000

CLEEP

↑

IAH

R-019

KABBY

I-BZU [21]

KICKM

I-BZU [16.7]

FLIBZ

I-BZU [8.9]

JACEN

I-BZU [5.6]

IM

GS 3.00°

TCH 59

4.2 NM

7.8 NM

3.3 NM

5.8 NM

1.14°

CATEGORY	A	B	C	D
S-ILS 8L	RA 158/14 150 DA 244			

SA CATEGORY I ILS - SPECIAL AIRCREW & AIRCRAFT CERTIFICATION REQUIRED

TDZ/CL Rwy 8R, 8L, 15R, 26R, 26L, 27 and 33L

HIRL all Rwy