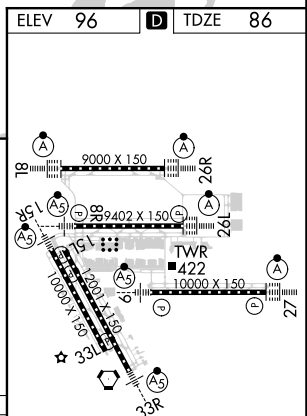
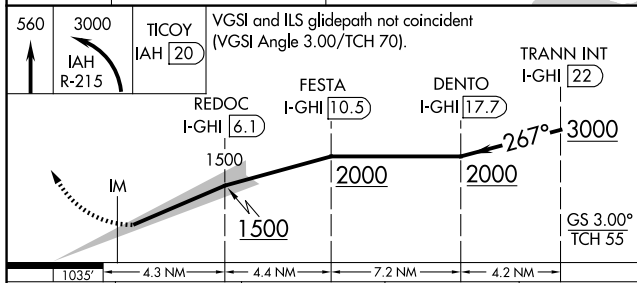
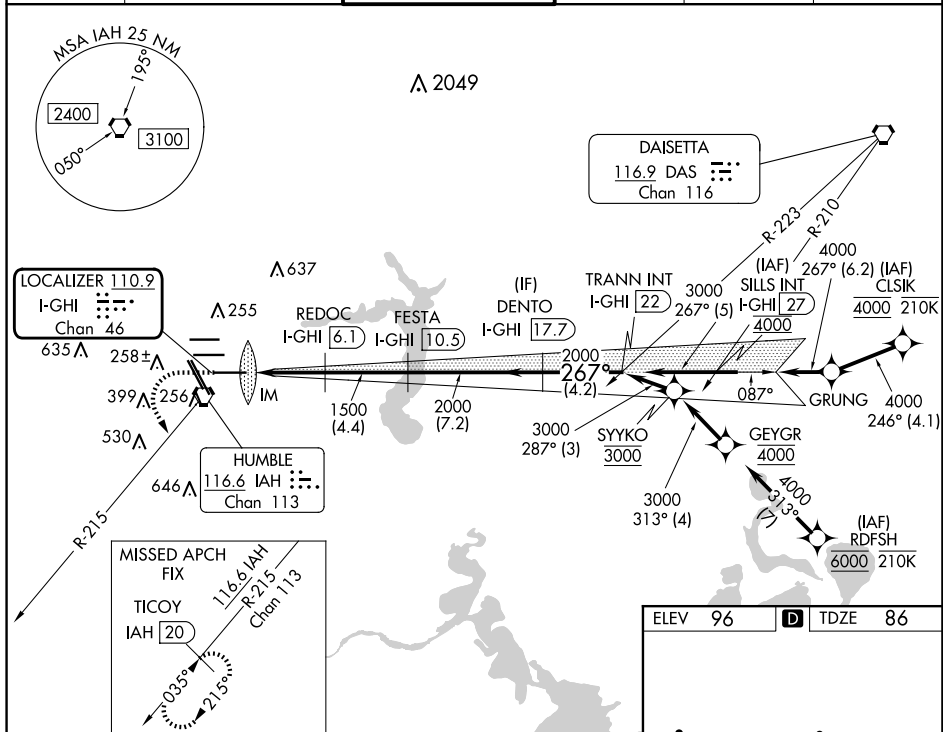


ILS RWY 27 (SA CAT I)
GEORGE BUSH INTCNTL/HOUSTON (IAH)

MISSED APPROACH: Climb to 560 then climbing left turn to 3000 on IAH VORTAC R-215 to TICOY/IAH 20 DME and hold.

D-ATIS 124.05	HOUSTON APP CON 120.05 379.1 EAST 124.35 316.15 WEST	HOUSTON TOWER 135.15 290.2	GND CON 118.575	CLNC DEL 128.1	CPDLC
-------------------------	--	--------------------------------------	---------------------------	--------------------------	-------



SA CATEGORY | ILS - SPECIAL AIRCREW
& AIRCRAFT CERTIFICATION REQUIRED

TDZ/CL Rwy's 8R, 8L, 15R, 26R, 26L,
27 and 33L
HRL qll Rwy's