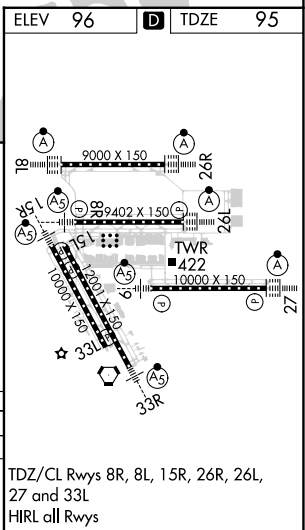
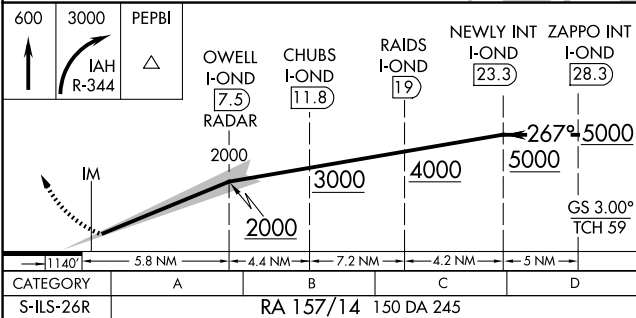
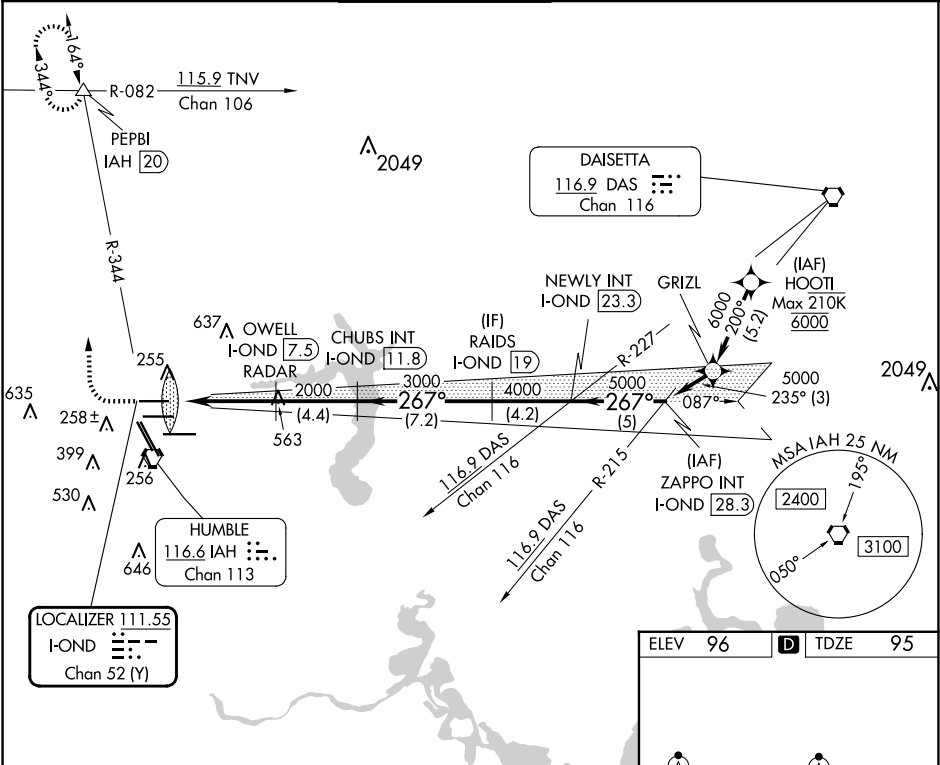


LOC/DME I-OND	APP CRS	Rwy Idg	9000
111.55	267°	TDZE	95
Chan 52 (Y)		Apt Elev	96

ILS RWY 26R(SA CAT I)  
GEORGE BUSH INTCNL/HOUSTON (IAH)

DME required. From HOOI: RNAV 1-GPS required.		ALSIF-2	MISSED APPROACH: Climb to 600 then climbing right turn to 3000 on IAH VORTAC R-344 to PEPBI INT/ IAH 20 DME and hold.		
Simultaneous approach authorized with Rwy 26L and Rwy 27. Requires specific OPSPEC, MSPEC or LOA approval and use of HUD to DH.			D-ATIS	HOUSTON APP CON	HOUSTON TOWER
			124.05	120.05 379.1 EAST 124.35 316.15 WEST	120.725 290.2
					GND CON
					118.575
					CLNC DEL
					128.1
					CPDLC



SA CATEGORY I ILS - SPECIAL AIRCREW  
& AIRCRAFT CERTIFICATION REQUIRED

TDZ/CL Rwy's 8R, 8L, 15R, 26R, 26L,  
27 and 33L  
HIRL all Rwy's

SC-5, 10 JUL 2025 to 07 AUG 2025

SC-5, 10 JUL 2025 to 07 AUG 2025