

LOC/DME I-JYV 109.7 Chan 34	APP CRS 267°	Rwy Idg TDZE Apt Elev	9402 95 96
---	------------------------	-----------------------------	---------------------------------------

ILS RWY 26L (SA CAT I)

GEORGE BUSH INTCNTL/HOUSTON (T A H)

DME required. From BOZZZ, GARRR: RNAV 1-GPS required.

T

Requires specific OPSPEC, MSPEC, or LOA approval and use of HUD to DH.

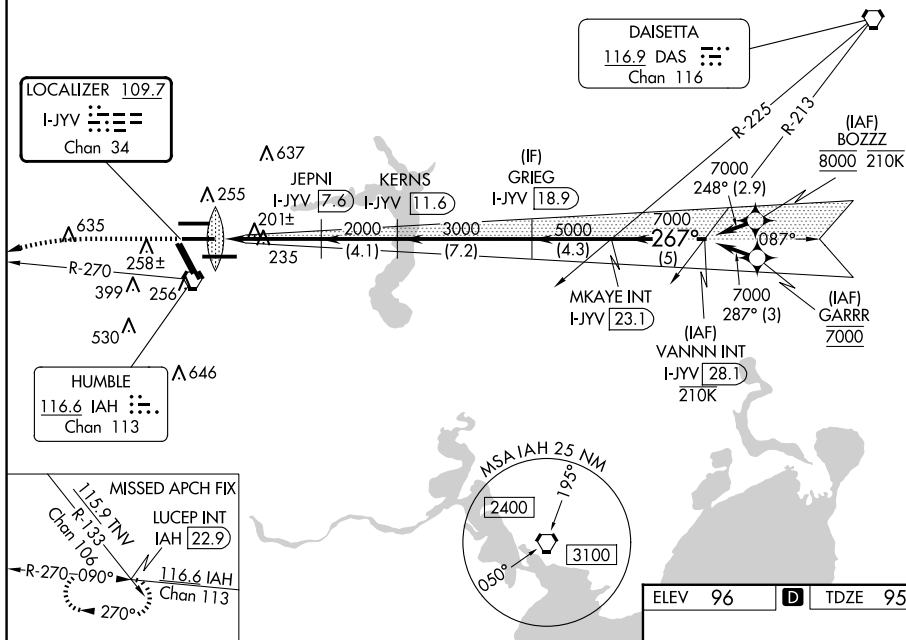
ALSF-2



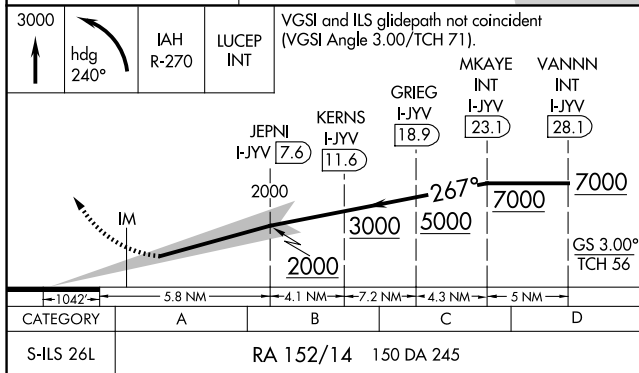
MISSED APPROACH: Climb to 3000 then left turn heading 240° and IAH VORTAC R-270 to LUCEP INT/IAH 22.9 DME and hold.

D-ATIS 124.05	HOUSTON APP CON 120.05 379.1 EAST 124.35 316.15 WEST	HOUSTON TOWER 125.35 290.2	GND CON 118.575	CLNC DEL 128.1	CPDLC
-------------------------	--	--------------------------------------	---------------------------	--------------------------	-------

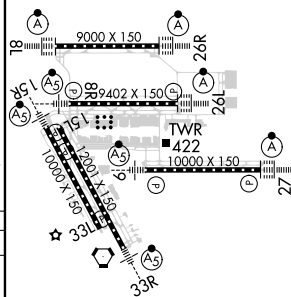
Λ 2049



ELEV 96	D	TDZE 95
---------	----------	---------



SA CATEGORY I ILS - SPECIAL AIRCREW
& AIRCRAFT CERTIFICATION REQUIRED



TDZ/CL Rwy's 8R, 8L, 15R, 26R, 26L,
27 and 33L
HRL all Rwy's