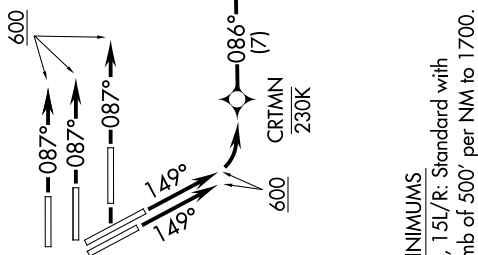


[illegible]

TAKEOFF MINIMUMS

Rwy 8L/R, 9, 15L/R: Standard with minimum climb of 500' per NM to 1

NOTE: RADAR required.

NOTE: DME/DME/IRU or GPS Required.

NOTE: RNAV 1.

(NARRATIVE ON FOLLOWING PAGE)

NOTE: Chart not to scale.