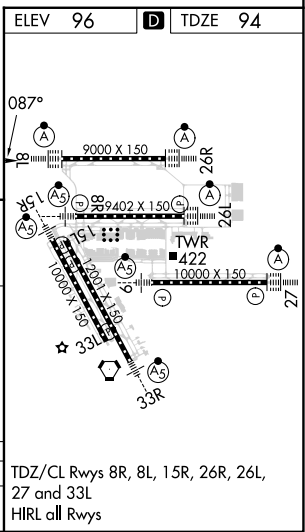
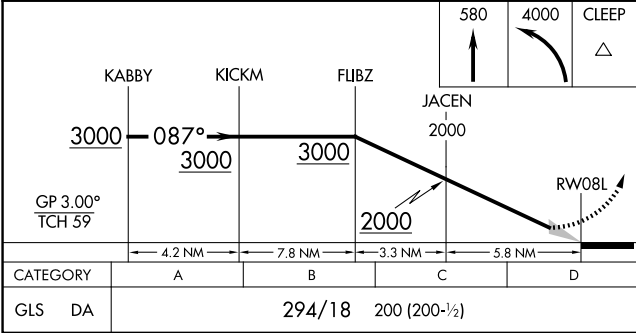
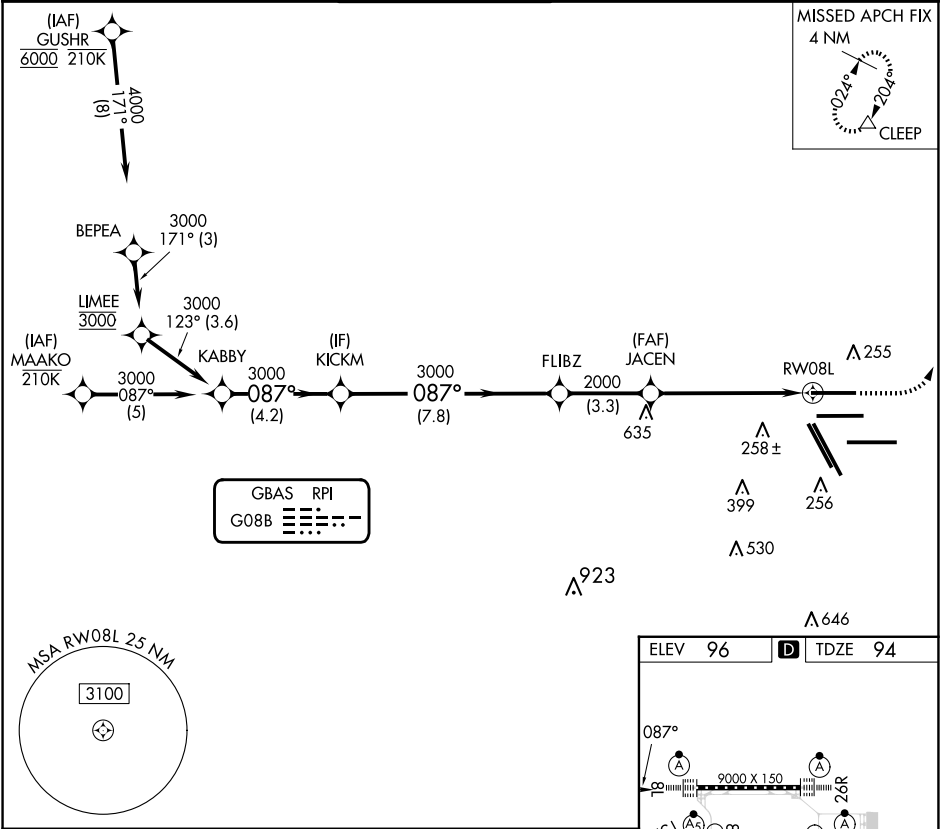


GBAS CH 21073 G08B	APP CRS 087°	Rwy Idg TDZE Apt Elev	9000 94 96
--	------------------------	-----------------------------	---------------------------------------

GLS RWY 8L

GEORGE BUSH INTCNL/HOUSTON (IAH)

RNP APCH - GPS.		ALSIF-2		MISSED APPROACH: Climb to 580 then climbing left turn to 4000 direct CLEEP and hold.	
Use of FD or AP required during simultaneous operations. Autopilot coupled approach NA below 294. Simultaneous approach authorized.					
D-ATIS 124.05	HOUSTON APP CON 120.05 379.1 EAST 124.35 316.15 WEST	HOUSTON TOWER 120.725 290.2	GND CON 118.575	CLNC DEL 128.1	CPDLC



SC-5, 10 JUL 2025 to 07 AUG 2025

SC-5, 10 JUL 2025 to 07 AUG 2025