

HOUSTON, TEXAS

AL-5461 (FAA)

24305

GBAS CH <b>22306</b> <b>G27A</b>	APP CRS <b>267°</b>	Rwy Idg <b>10000</b> TDZE <b>86</b> Apt Elev <b>96</b>
----------------------------------------	------------------------	--------------------------------------------------------------

GLS RWY 27  
GEORGE BUSH INTCNL/HOUSTON (IAH)

RNP APCH - GPS.

**T**  
**A** NA

Simultaneous approach authorized. Use of FD or AP required during simultaneous operations. Autopilot coupled approach NA below 286.

ALSF-2



**MISSED APPROACH:** Climb to 560 then climbing left turn to 3100 direct TICOY and hold.

D-ATIS <b>124.05</b>	HOUSTON APP CON <b>120.05 379.1</b> EAST <b>124.35 316.15</b> WEST	HOUSTON TOWER <b>135.15 290.2</b>	GND CON <b>118.575</b>	CLNC DEL <b>128.1</b>	CPDLC
-------------------------	--------------------------------------------------------------------------	--------------------------------------	---------------------------	--------------------------	-------

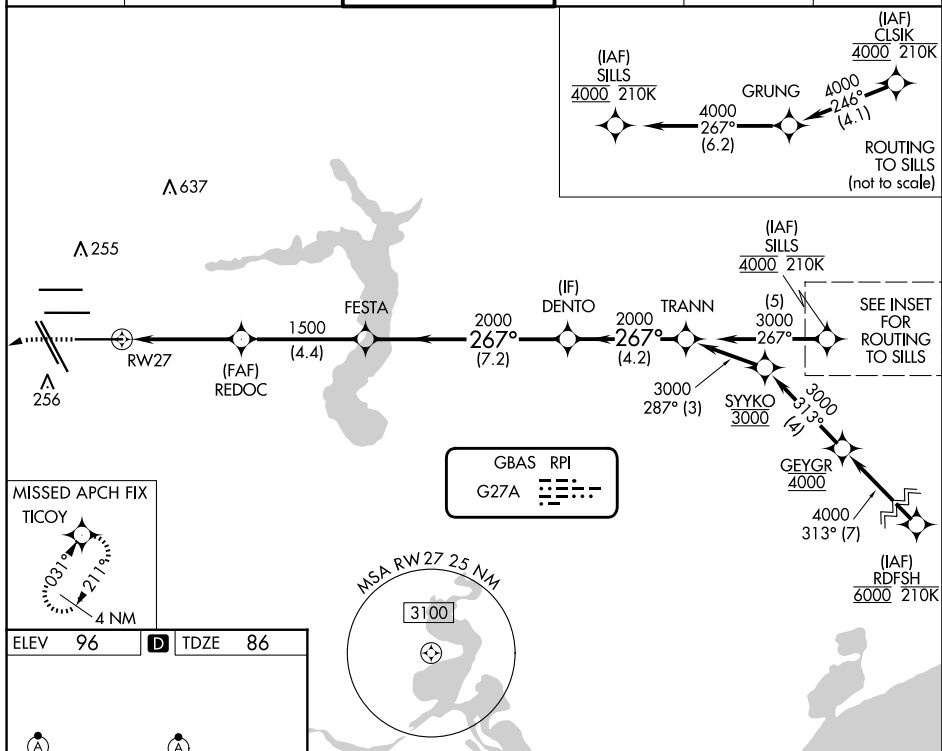


Diagram illustrating the proposed runway layout for the new runway (RW27) and existing runways (RW8, RW15, RW26, RW26L, RW33, RW33R). The diagram shows the layout of RW27 (2670m x 45m) and its intersection with RW33 (1000m x 150m). It also shows the layout of RW8 (9000m x 150m), RW15 (9402m x 150m), RW26 (10000m x 150m), RW26L (10000m x 150m), RW33 (1000m x 150m), and RW33R (1000m x 150m). The diagram includes a legend for symbols: a straight arrow for 560, a curved arrow for 3100, and a star for TICOY. It also includes a note: 'VGSI and GLS glidepath not coincident (VGSI Angle 3.00/TCH 70)'.

HOUSTON, TEXAS

Amdt 2 23FEB23

GEORGE BUSH INTCNL/HOUSTON (IAH)

29°59'N-95°20'W

GLS RWY 27

SC-5, 10 JUL 2025 to 07 AUG 2025