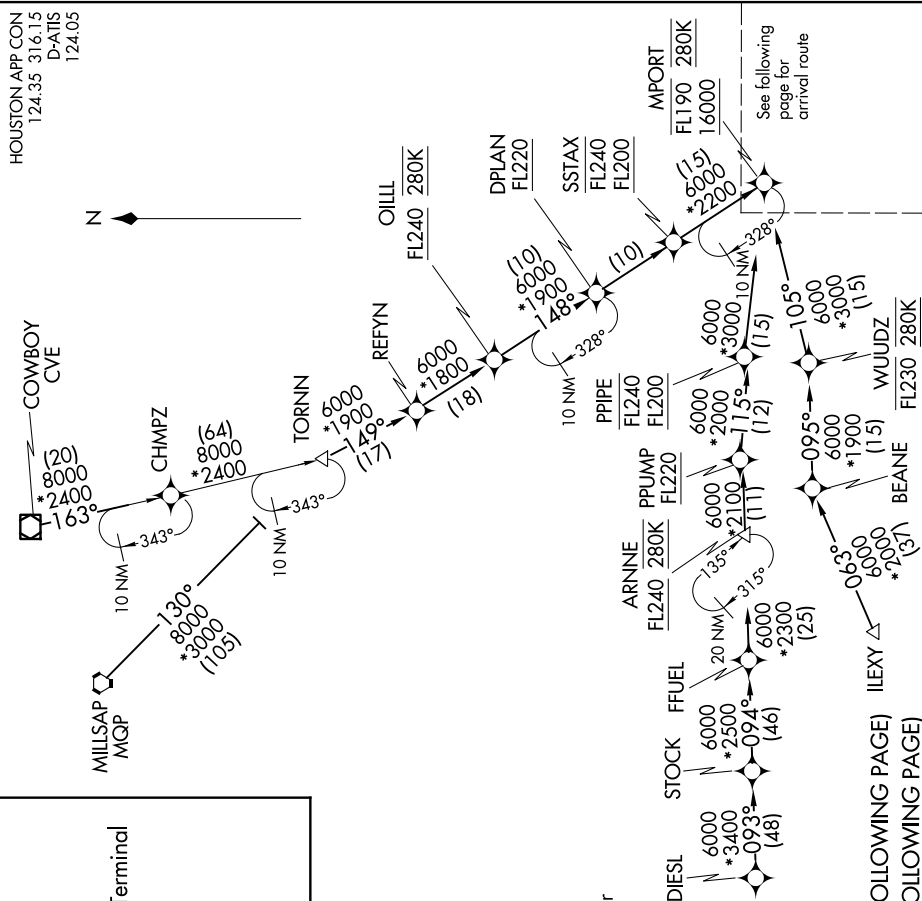


DRLLR FIVE ARRIVAL (RNAV) Transition Routes

HOUSTON, TEXAS



(NOTES ON THE FOLLOWING PAGE)

(NARRATIVE ON FOLLOWING PAGE)

NOTE: Chart not to scale.

COWBOY TRANSITION (CVE.DRLR5):

DIESEL TRANSITION (DIESEL.DRLR5):

ILEXY TRANSITION (ILEXY.DRLR5): Austin Terminal

Area Departures only.

WILLSAP TRANSITION (MQP.DRLR5):

OILL TRANSITION (OILL:DRLLR5):

TORNN TRANSITION (TORNN.DRLR5):

NOTE: RADAR required.

NOTE: RNAV 1.

NOTE: DME/DME/IRU or GPS required.

NOTE: Turbojet and turboprop aircraft capable of 280K or greater only.

NOTE: Fly the Runway 26R transition; Houston Approach control may assign a different transition on initial contact.

NOTE: Corresponding RNAV STAR is GUSHR.

NOTE: Expect GUSHR when IAH is landing east.
Turbojet aircraft descend via mach number until intercepting 280K. Maintain 280K until slowed by the STAR.

HOUSTON, TEXAS