


WAAS CH 42606 W09A	APP CRS 092°	Rwy Idg TDZE Apt Elev	6500 769 770
--	------------------------	-----------------------------	---

RNAV (GPS) RWY 9
PORTER COUNTY RGNL (VPZ)

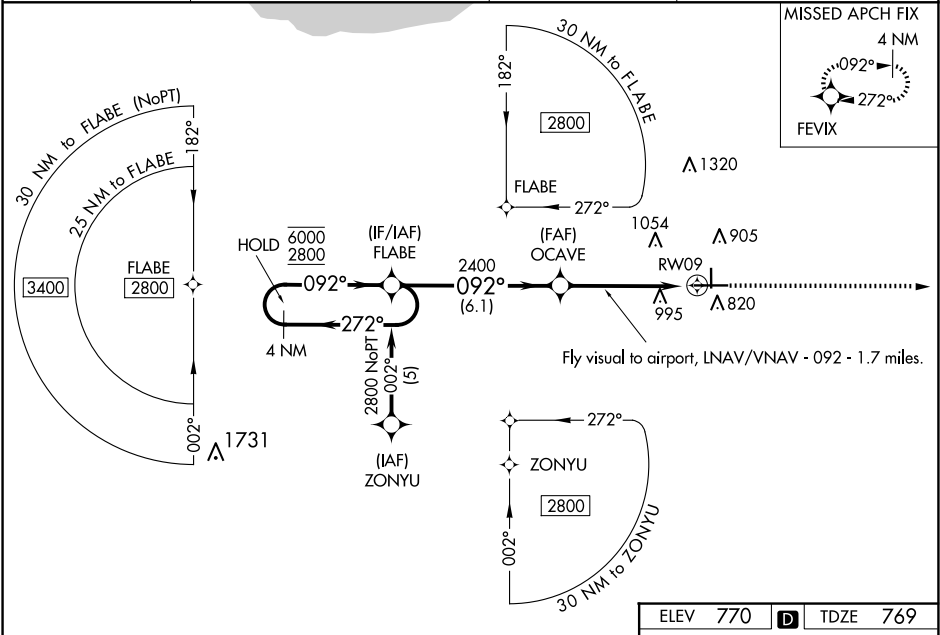
RNP APCH.



Rwy 9 helicopter visibility reduction below 3/4 SM NA. For uncompensated Baro-VNAV systems, LNAV/VNAV NA below -16°C or above 47°C.

MISSED APPROACH:
Climb to 2600 direct FEVIX and hold.

ASOS 125.875	SOUTH BEND APP CON ★ 132.05 257.8	CLNC DEL 120.525	UNICOM 122.725 (CTAF) 0
------------------------	---	----------------------------	-----------------------------------



Fly visual to airport, LNAV/VNAV - 092 - 1.7 miles.

4 NM Holding Pattern

FLABE

OCAVE

RW09

GP 3.00° TCH 45

6.1 NM 3.5 NM 1.4 NM

2600 FEVIX

*LNAV only.

8 L

4001 X 755

0.3% UP

7001 X 150

809

092°

CATEGORY	A	B	C	D
LPV DA	1038-1		269 (300-1)	
LNAV/VNAV DA	1369-2		600 (600-2)	
LNAV MDA	1260-1	491 (500-1)	1260-1¼ 491 (500-1¼)	1260-1½ 491 (500-1½)
CIRCLING	1260-1 490 (500-1)	1300-1 530 (600-1)	1360-1½ 590 (600-1½)	1620-2¾ 850 (900-2¾)

HIRL Rwy 9-27 0

MIRL Rwy 18-36 0

REIL Rws 9, 18 and 36 0

EC-2, 10 JUL 2025 to 07 AUG 2025

EC-2, 10 JUL 2025 to 07 AUG 2025