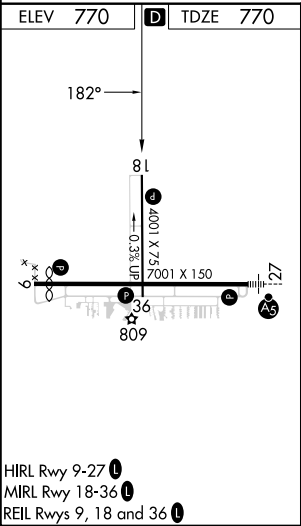
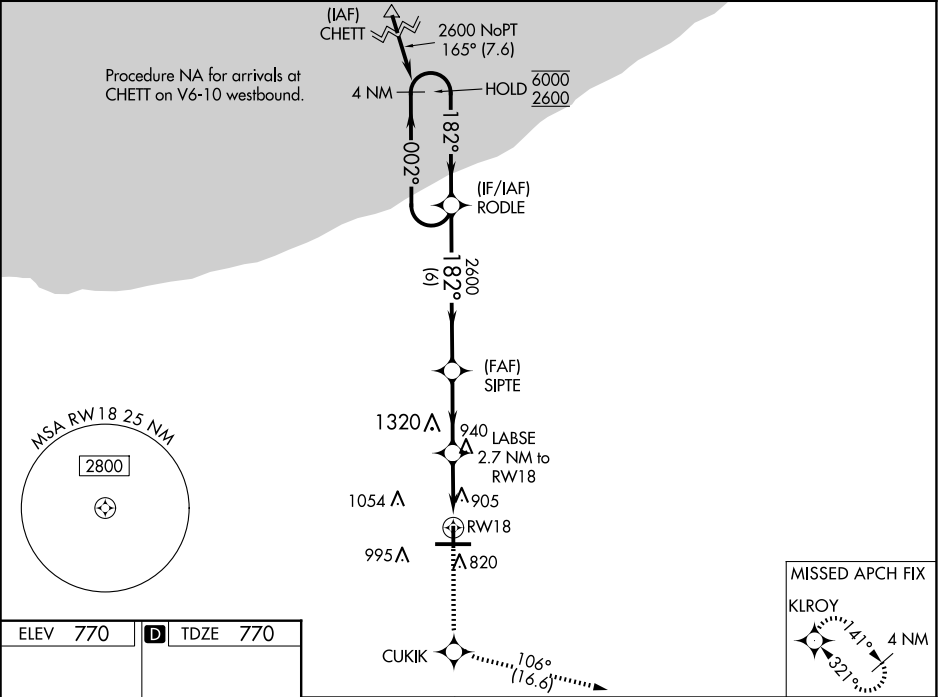


WAAS CH <b>82406</b> <b>W18A</b>	APP CRS <b>182°</b>	Rwy Idg TDZE Apt Elev	<b>4001</b> <b>770</b> <b>770</b>
--	------------------------	-----------------------------	---

RNAV (GPS) RWY 18  
PORTER COUNTY RGNL (VPZ)

RNP APCH-GPS.		MISSED APPROACH: Climb to 2400 direct CUKIK and on track 106° to KIROJ and hold.
<div><div>▼</div><div>▲</div></div>	Rwy 18 helicopter visibility reduction below ¾ SM NA. For uncompensated Baro-VNAV systems, LNAV/VNAV NA below -21°C or above 54°C.	

ASOS <b>125.875</b>	SOUTH BEND APP CON ★ <b>132.05 257.8</b>	CLNC DEL <b>120.525</b>	UNICOM <b>122.725 (CTAF) 0</b>
------------------------	---	----------------------------	-----------------------------------



ELEV 770		D TDZE 770	
182°		81	
0.3% LP		4001 X 75	
7001 X 150		36	
809		27	
3400		CUKIK	
tr 106°		KLROY	
VGS and RNAV glidepath not coincident (VGS Angle 3.00/TCH 24).		4 NM	
Holding Pattern		RODLE	
1.3 NM to RW18		SIPT	
2.7 NM to RW18		LABSE	
1660		182°	
1.3 NM		1.4 NM	
3 NM		6 NM	
CATEGORY	A	B	C
LPV DA	1059-7/8	289 (300-7/8)	NA
LNAV/VNAV DA	1200-1 1/4	430 (500-1 1/4)	NA
LNAV MDA	1200-1	430 (500-1)	NA
CIRCLING	1260-1	1300-1	NA
	490 (500-1)	530 (600-1)	

EC-2, 10 JUL 2025 to 07 AUG 2025

EC-2, 10 JUL 2025 to 07 AUG 2025