

LOC I-VPZ
109.7

APP CRS
272°

Rwy Idg
TDZE
Apt Elev
6500
770
770

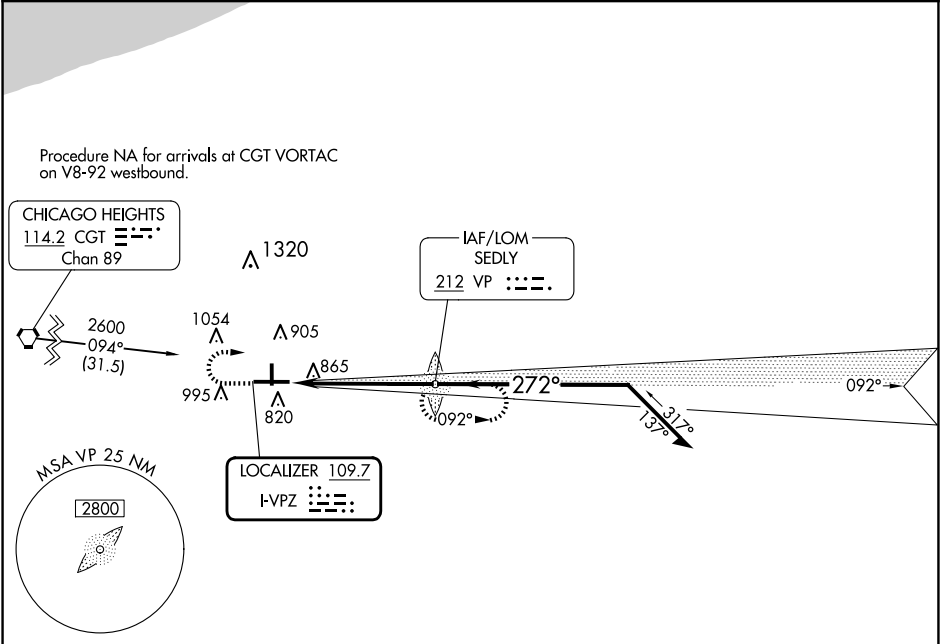
ILS or LOC RWY 27
PORTER COUNTY RGNL (VPZ)

ADF required.
▼
▲ For inop ALS, increase S-LOC 27 Cats C and D visibility to 1 SM.

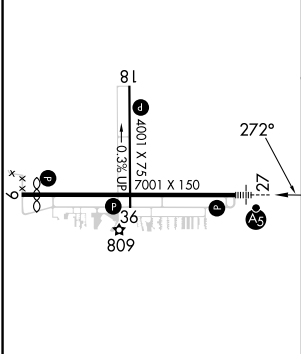
MALSR
AS

MISSED APPROACH: Climb to 1400, then climbing right turn to 2600 direct SEDLY LOM and hold, continue climb-in-hold to 2600.

ASOS 125.875	SOUTH BEND APP CON ★ 132.05 257.8	CLNC DEL 120.525	UNICOM 122.725 (CTAF) 0
------------------------	---	----------------------------	-----------------------------------



ELEV 770	D	TDZE 770
----------	---	----------



HIRL Rwy 9-27
MIRL Rwy 18-36
REIL Rwys 9, 18 and 36

FAF to MAP 5.3 NM

Knots	60	90	120	150	180
Min:Sec	5:18	3:32	2:39	2:07	1:46

1400

2600

VP

↑

↪

Remain within 10 NM

VP LOM

2528

092°

2600

272°

2600

GS 3.00°

TCH 51

5.3 NM

CATEGORY	A	B	C	D
S-ILS 27	970-½ 200 (200-½)			
S-LOC 27	1120-½ 350 (400-½)		1120-⅝ 350 (400-⅝)	
CIRCLING	1260-1 490 (500-1)	1300-1 530 (600-1)	1360-1½ 590 (600-1½)	1620-2¾ 850 (900-2¾)