

ORMOND BEACH, FLORIDA

AL-5459 (FAA)

25163

WAAS
CH 77634
W27A

APP CRS
265°

Rwy Ldg	4005
TDZE	28
Apt Elev	28

RNAV (GPS) RWY 27

ORMOND BEACH MUNI (OMN)

RNP APCH.



Rwy 27 helicopter visibility reduction below $\frac{3}{4}$ SM NA.

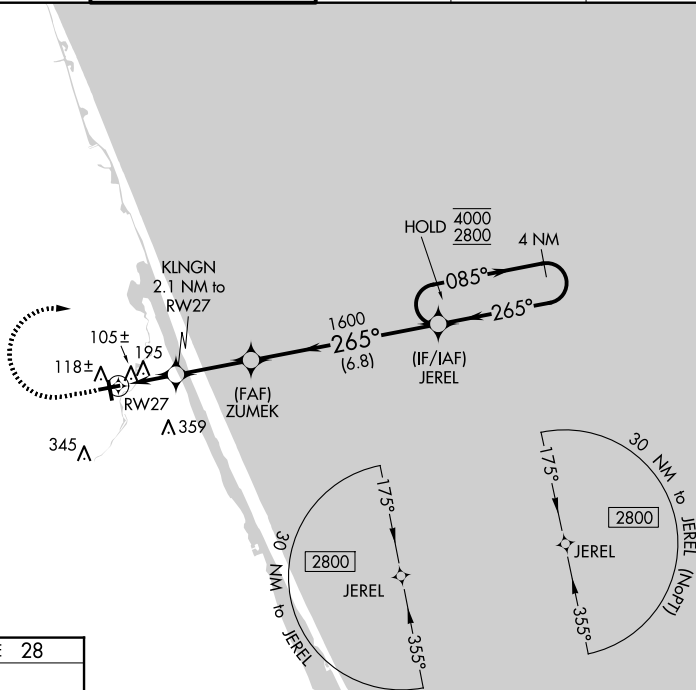
MISSED APPROACH: Climb to 600 then climbing right turn to 2800 direct JEREL and hold.

ATIS
118.475

DAYTONA APP CON
125.8 269.075

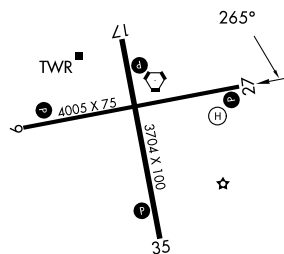
ORMOND BEACH TOWER★
119.075(CTAF) L

GND CON
121.625

CLNC DEL
121.625UNICOM
123.05 Λ_{1248} 




ELEV 28

TDZE 28



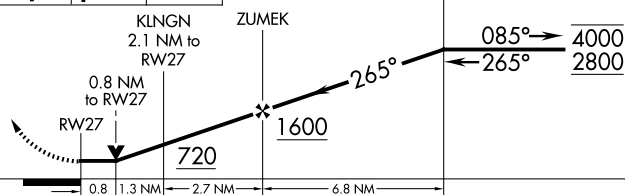
REIL Rwy 9, 17, 27, and 35 L

MIRI Rwyys 9-27 and 17-35 1

600	2800	JEREL
		

Visual Segment - Obstacles.

4 NM
Holding Pattern



CATEGORY	A	B	C	D
LP MDA	360-1 332 (400-1)			NA
LNAV MDA	460-1	432 (500-1)	460-1½ 432 (500-1¼)	NA
C CIRCLING	500-1	472 (500-1)	740-2 712 (800-2)	NA

ORMOND BEACH, FLORIDA

Amdt 1C 10OCT19

29°18'N-81°07'W

ORMOND BEACH MUNI (OMN)

RNAV (GPS) RWY 27

SE-3, 10 JUL 2025 to 07 AUG 2025