

WAAS
CH **40234**
W17A

APP CRS
175°

Rwy Ldg
TDZE **27**
Apt Elev **28**

RNAV (GPS) RWY 17
ORMOND BEACH MUNI (OMN)

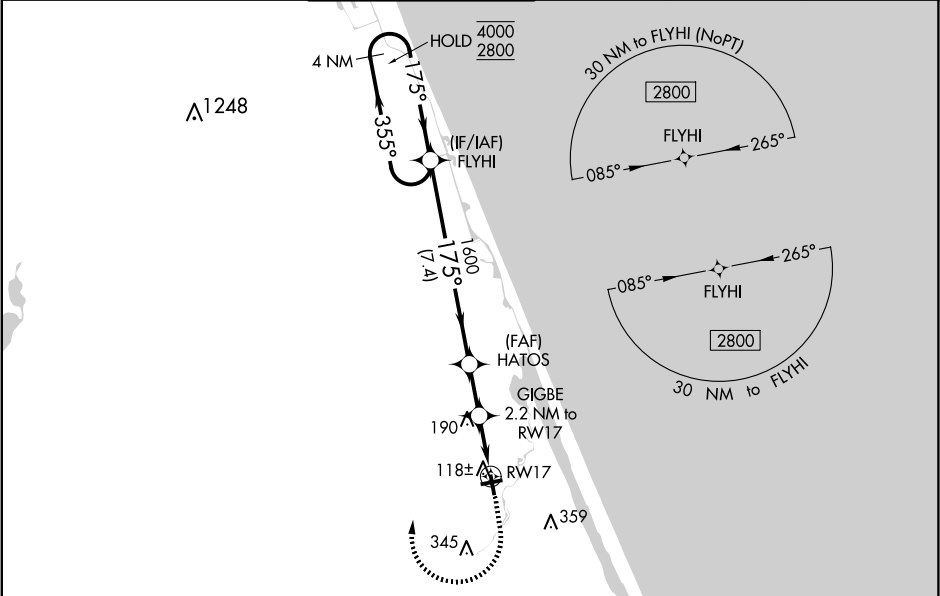
RNP APCH - GPS.

For uncompensated Baro-VNAV systems, LNAV/VNAV NA below -15°C or above 54°C.

Baro-VNAV and VDP NA when using DAB altimeter setting. Rwy 17 helicopter visibility reduction below ¾ SM NA. When local altimeter setting not received, use DAB altimeter setting: increase LPV DA to 321 feet; increase LNAV/VNAV DA to 316 feet; increase all MDAs 20 feet.

MISSED APPROACH: Climb to 600 then climbing right turn to 2800 direct FLYHI and hold, continue climb-in-hold to 2800.

ATIS 118.475	DAYTONA APP CON 125.8 269.075	ORMOND BEACH TOWER★ 119.075 (CTAF)	GND CON 121.625	CLNC DEL 121.625	UNICOM 123.05
------------------------	---	--	---------------------------	----------------------------	-------------------------



VGSI and RNAV glidepath not coincident (VGSI Angle 3.50/TCH 51).		600	2800	FLYHI
4 NM Holding Pattern		FLYHI	HATOS	GIGBE 2.2 NM to RW17
4000 ← 355° → 2800		175°	1600	900
GP 3.50° TCH 60		1600	900	1.1 NM to RW17
7.4 NM		1.9 NM	1.1 NM	1.1 NM
CATEGORY	A	B	C	D
LPV DA	302-7/8	275 (300-7/8)		NA
LNAV/VNAV DA	297-7/8	270 (300-7/8)		NA
LNAV MDA	500-1	473 (500-1)	500-1 3/8 473 (500-1 3/8)	NA
CIRCLING	500-1	472 (500-1)	740-2 712 (800-2)	NA

ELEV 28

TDZE 27

175°

TWR

4005 X 75

3704 X 100

35

27

☆

REIL Rwy 9, 17, 27, and 35
MIRL Rwy 9-27 and 17-35