

WAAS CH <b>90409</b> <b>W12A</b>	APP CRS <b>120°</b>	Rwy Idg TDZE Apt Elev	<b>5000</b> <b>1274</b> <b>1274</b>
--	------------------------	-----------------------------	---

RNAV (GPS) RWY 12

DENISON MUNI (DNS)

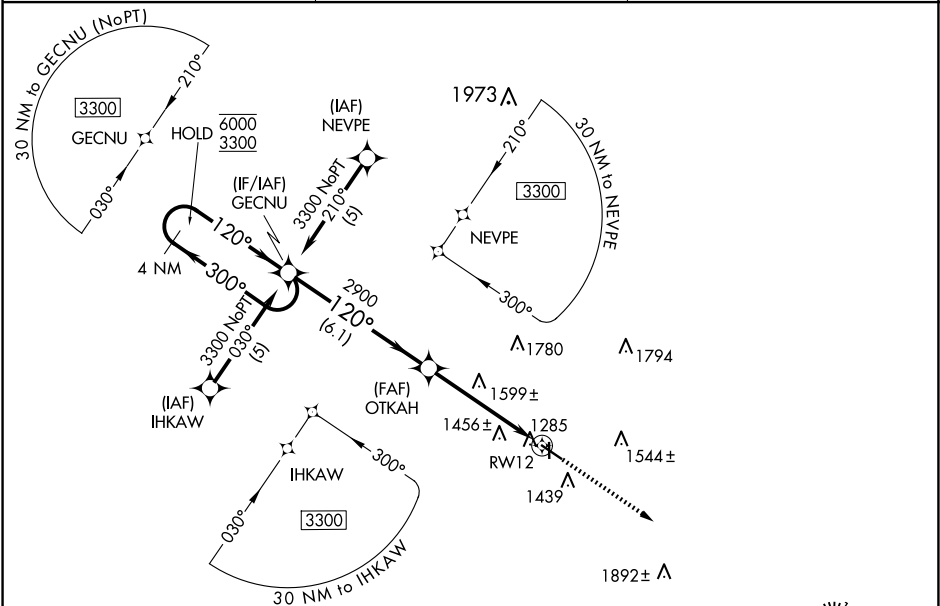
RNP APCH-GPS.

⚠

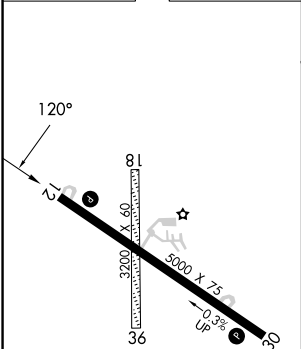
Circling NA to Rwy 18 and 36. For uncompensated Baro-VNAV systems, LNAV/VNAV NA below -17°C or above 54°C. Baro-VNAV and VDP NA when using Carroll altimeter setting. When local altimeter setting not received, use Carroll altimeter setting; increase LPV DA 1596 feet, LNAV/VNAV DA to 1626 feet; increase all MDAs 80 feet and visibility LNAV Cat C ½ SM and Circling Cat C ¾ SM.

MISSED APPROACH:  
Climb to 3900 direct  
OTLAZ and hold.

AWOS-3 <b>119.95</b>	MINNEAPOLIS CENTER <b>119.6 290.4</b>	UNICOM <b>122.8 (CTAF) 0</b>
-------------------------	--	---------------------------------



ELEV 1274	TDZE 1274
-----------	-----------



4 NM Holding Pattern		VGSI and RNAV glidepath not coincident (VGSI Angle 3.00/TCH 27).		3900	OTLAZ
GECNU		OTKAH		*LNAV only	
6000	← 300°	2900	2900	*1.8 NM to RW12	RW12
3300	→ 120°				
GP 3.00° TCH 40		6.1 NM	3.1 NM	1.8	
CATEGORY	A	B	C	D	
LPV DA	1524-1 250 (300-1)			NA	
LNAV/VNAV DA	1554-1 280 (300-1)			NA	
LNAV MDA	1860-1	586 (600-1)	1860-1 586 (600-1 3/4)	NA	
CIRCLING	1860-1 586 (600-1)	1880-1 606 (700-1)	2100-2 826 (900-2 1/2)	NA	