

WAAS CH <b>41063</b> <b>W17A</b>	APP CRS <b>168°</b>	Rwy Idg <b>6002</b> TDZE <b>152</b> Apt Elev <b>152</b>
--	------------------------	---

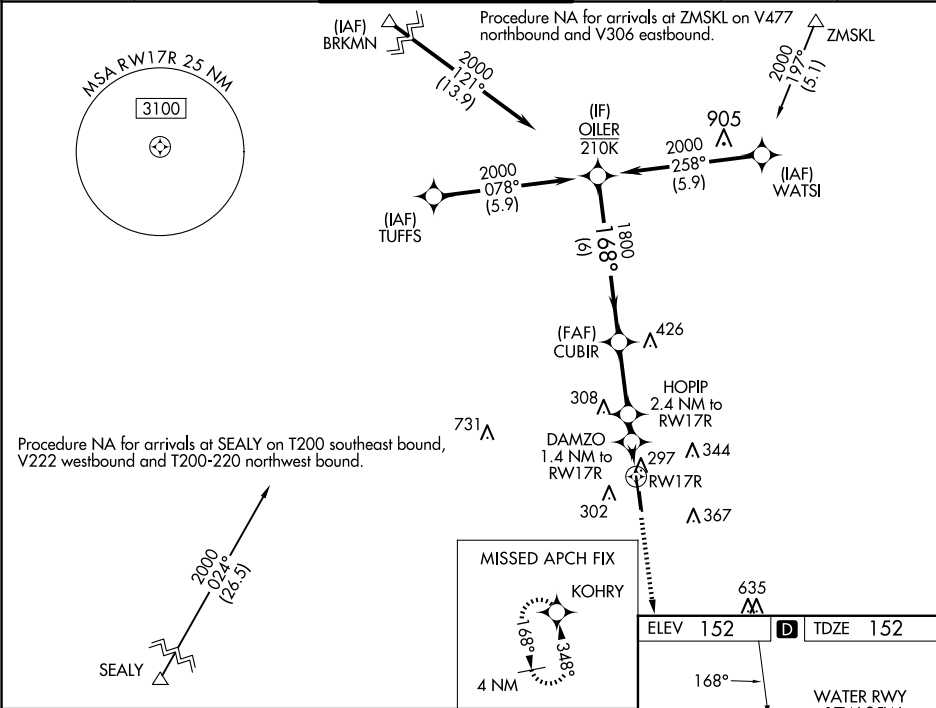
RNAV (GPS) RWY 17R  
DAVID WAYNE HOOKS MEML (DWH)

RNP APCH-GPS.

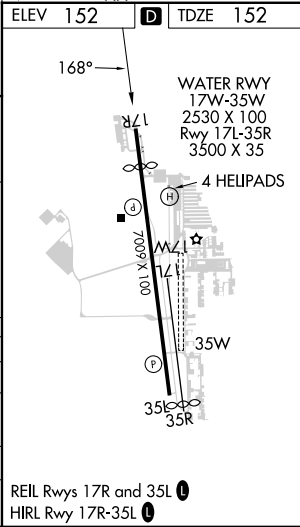
Baro-VNAV NA when using George Bush Intcntl/Houston altimeter setting. For uncompensated Baro-VNAV systems, procedure NA below -2°C or above 54°C. Rwy 17R helicopter visibility reduction below ¾ SM NA. When local altimeter setting not received, use George Bush Intcntl/Houston altimeter setting: Increase all DAs 36 feet and visibilities ½ SM; increase all MDAs 40 feet. When control tower closed, LPV visibility 1 SM.

MISSED APPROACH:  
Climb to 2000 direct KOHRY and hold.

ATIS <b>128.375</b>	HOUSTON APP CON <b>119.7 281.4</b>	HOOKS TOWER* <b>127.4 354.1</b> EAST <b>118.4</b> (CTAF) <b>0 354.1</b> WEST	GND CON <b>121.8 239.0</b>	CLNC DEL <b>119.45</b>	UNICOM <b>122.95</b>
------------------------	---------------------------------------	--	-------------------------------	---------------------------	-------------------------



--	--	--	--	--



SC-5, 10 JUL 2025 to 07 AUG 2025

SC-5, 10 JUL 2025 to 07 AUG 2025