

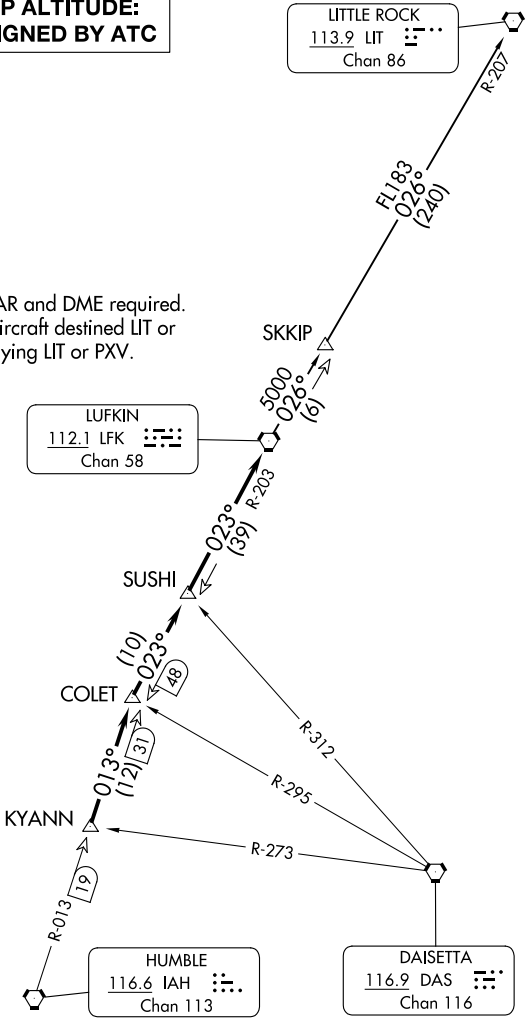
ATIS  
128.375  
CLNC DEL  
119.45  
GND CON  
121.8 239.0  
HOOKS TOWER★  
127.4 354.1 (EAST)  
118.4 (CTAF) 354.1 (WEST)  
HOUSTON DEP CON  
119.7 281.4

TOP ALTITUDE:  
ASSIGNED BY ATC

LITTLE ROCK  
113.9 LIT  
Chan 86

NOTE: RADAR and DME required.  
NOTE: For aircraft destined LIT or  
overflying LIT or PXV.

LUFKIN  
112.1 LFK  
Chan 58



TAKEOFF MINIMUMS  
Rwys 17L, 35R: NA - Environmental.  
Waterways 17, 35: NA - Air Traffic.  
Rwys 17R, 35L: Standard.

NOTE: Chart not to scale. (CONTINUED ON FOLLOWING PAGE)