

LOC/DME I-HEW 110.5 Chan 42	APP CRS 168°	Rwy Idg 6002 TDZE 152 Apt Elev 152
---	------------------------	---

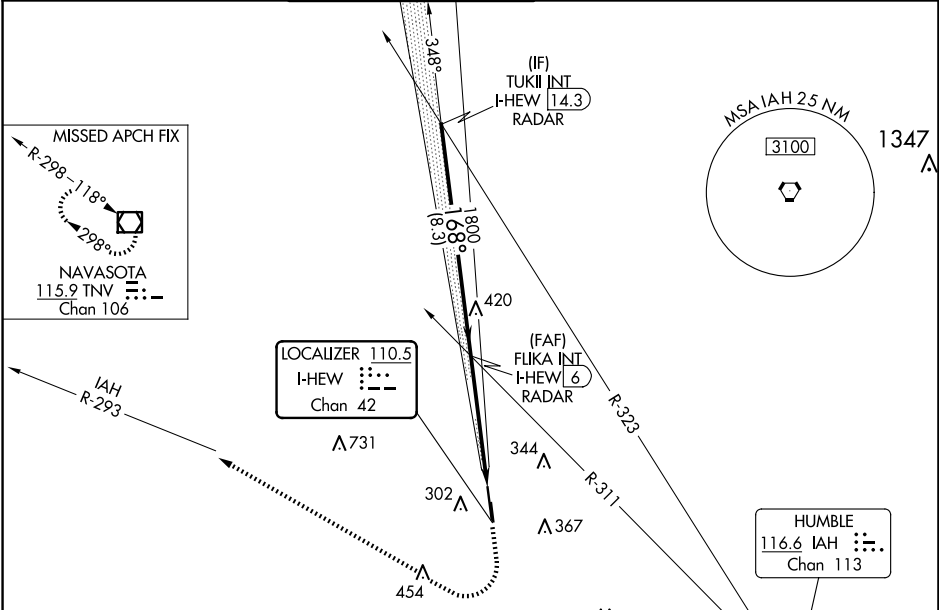
LOC RWY 17R
DAVID WAYNE HOOKS MEML (DWH)

RADAR required for procedure entry.

When local altimeter setting not received, use George Bush Intcnl/Houston altimeter setting and increase all MDA 40 feet; increase S-LOC 17R Cts C/D visibility ½ mile. Circling NA to Rwys 17W and 35W. Rwy 17R helicopter visibility reduction below ¾ SM NA. Circling Rwy 35R NA at night.

MISSED APPROACH: Climb to 1200 then climbing right turn to 2000 on heading 325° and IAH VORTAC R-293 to TNV VOR/DME and hold.

ATIS 128.375	HOUSTON APP CON 119.7 281.4	HOOKS TOWER★ 127.4 354.1 EAST 118.4 (CTAF) 354.1 WEST	GND CON 121.8 239.0	CLNC DEL 119.45	UNICOM 122.95
------------------------	---------------------------------------	---	-------------------------------	---------------------------	-------------------------



ELEV 152 | D | TDZE 152

WATER RWY 17W-35W 2530 X 100
Rwy 17L-35R 3500 X 35

HIRL Rwy 17R-35L
REIL Rws 17R and 35L

FAF to MAP 4.9NM

Knots	60	90	120	150	180
Min:Sec	4:54	3:16	2:27	1:58	1:38

Visual Segment - Obstacles.

CATEGORY	A	B	C	D
S-LOC 17R	640-1	488 (500-1)	640-1½	488 (500-1½)
CIRCLING	640-1 488 (500-1)	660-1 508 (600-1)	680-1½ 528 (600-1½)	780-2 628 (700-2)

SC-5, 10 JUL 2025 to 07 AUG 2025

SC-5, 10 JUL 2025 to 07 AUG 2025