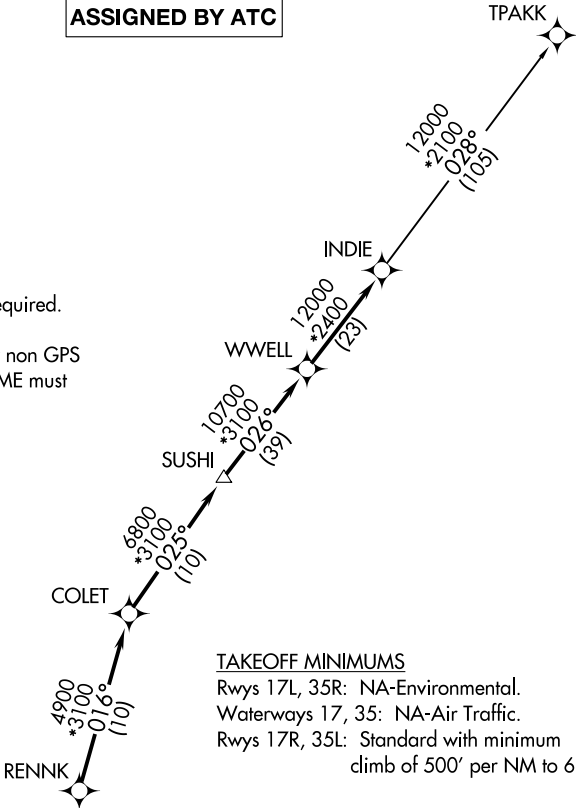


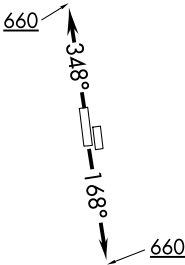
ATIS  
128.375  
CLNC DEL  
119.45  
GND CON  
121.8 239.0  
HOOKS TOWER ★  
127.4 354.1 (EAST)  
118.4 (CTAF) 354.1 (WEST)  
HOUSTON DEP CON  
119.7 281.4

TOP ALTITUDE:  
ASSIGNED BY ATC

- NOTE: RADAR required.  
NOTE: DME/DME/IRU or GPS required.  
NOTE: RNAV 1.  
NOTE: TPAKK TRANSITION: For non GPS  
equipped aircraft TNV DME must  
be operational.



TAKEOFF MINIMUMS  
Rwys 17L, 35R: NA-Environmental.  
Waterways 17, 35: NA-Air Traffic.  
Rwys 17R, 35L: Standard with minimum  
climb of 500' per NM to 660.



DEPARTURE ROUTE DESCRIPTION

TAKEOFF RUNWAY 17R: Climb on heading 168° to 660  
for RADAR vectors to RENNK, then. . . .  
TAKEOFF RUNWAY 35L: Climb on heading 348° to 660  
for RADAR vectors to RENNK, then. . . .

. . . .on track 016° to COLET, then on track 025° to  
SUSHI, then on track 026° to WWELL, then on track  
026° to INDIE, then on (transition). Maintain ATC  
assigned altitude. Expect filed altitude 10 minutes  
after departure.

TPAKK TRANSITION (INDIE8.TPAKK)

NOTE: Chart not to scale.