

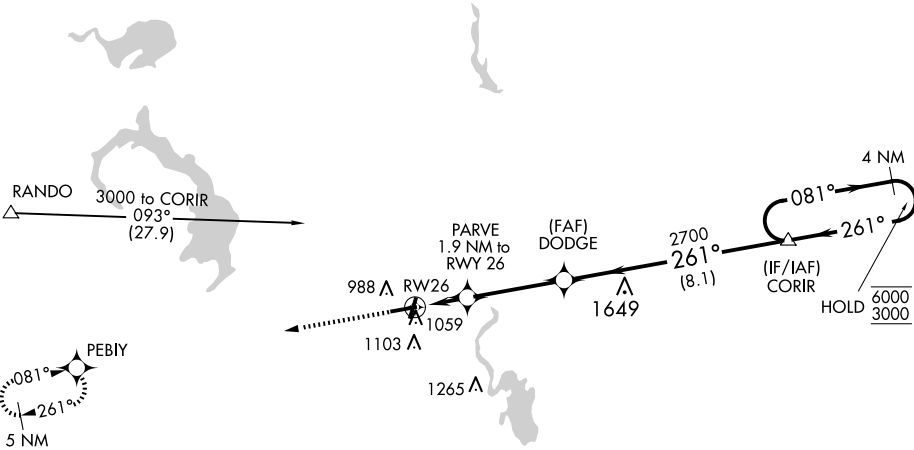
APP CRS	Rwy Ldg	5070
261°	TDZE	934
	Apt Elev	934

RNAV (GPS) RWY 26

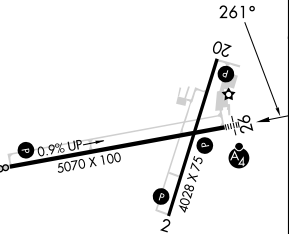
DODGE COUNTY(UNU)

RNP APCH - GPS.		MALSF	MISSED APPROACH: Climb to 3000 direct PEBIY and hold.
AWOS-3 120.825		MADISON APP CON ★ 119.15 343.7	
		UNICOM 122.7 (CTAF) 0	

Procedure NA for arrivals at RANDO on V9-341 southwest bound and V170 northwest bound.



ELEV 934	TDZE 934
----------	----------



3000	PEBIY	VGSI and descent angles not coincident (VGSI Angle 3.00/TCH 35).		4 NM Holding Pattern
PARVE 1.9 NM to RWY 26	DODGE	CORIR	081° → 6000 ← 261° 3000	
1.1 NM to RWY 26	3.00° TCH 40	2700		
1.1 NM	0.8	3.5 NM	8.1 NM	
CATEGORY	A	B	C	D
LNAV MDA	1320-¾	386 (400-¾)	1320-⅞ 386 (400-⅞)	NA
CIRCLING	1420-1	486 (500-1)	1420-1½ 486 (500-1½)	NA

EC-3, 10 JUL 2025 to 07 AUG 2025

EC-3, 10 JUL 2025 to 07 AUG 2025