

KENOSHA, WISCONSIN

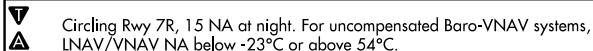
AL-5449 (FAA)

23278

WAAS CH 49014 W25A	APP CRS 246°	Rwy Idg 6600 TDZE 723 Apt Elev 742
--	------------------------	---


RNAV (GPS) RWY 25R
KENOSHA RGNL (ENW)

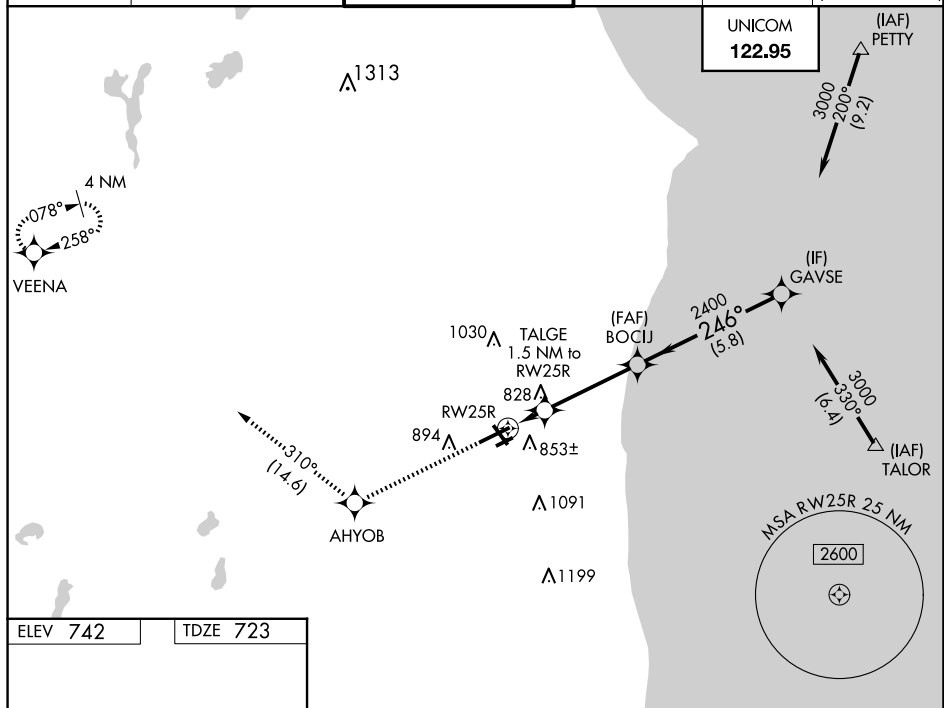
RNP APCH.



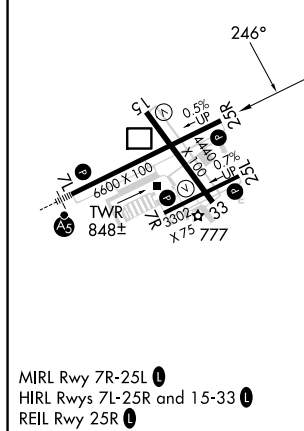
MISSED APPROACH:
Climb to 3000 direct AHYOB
and on track 310° to
VEENA and hold

ATIS 127.175	MILWAUKEE APP CON 135.875 317.725	KENOSHA TOWER ★ 118.6 (CTAF) 0 353.6	GND CON 121.875	CLNC DEL 121.875	CLNC DEL 118.6 (When twr closed)
-----------------	--------------------------------------	---	--------------------	---------------------	--

UNICOM 122.95	(IAF) PETTY 
-------------------------	---



ELEV 742		TDZE 723
----------	--	----------



3000 		AHYOB 		tr 310° 		VEENA 		GAVSE 3000	
*LNAV only		TALGE 1.5 NM to RW25R		BOCIJ 2400		246°		3000	
		*1220		2400		GP 3.00° TCH 45			
		1.5 NM		3.7 NM		5.8 NM			
CATEGORY		A		B		C		D	
LPV	DA	923-3/4		200 (200-3/4)					
LNAV/ VNAV	DA	984-7/8		261 (300-7/8)					
LNAV	MDA	1080-1		357 (400-1)					
CIRCLING		1200-1 458 (500-1)		1340-1 598 (600-1)		1400-1 3/4 658 (700-1 3/4)		1440-2 1/4 698 (700-2 1/4)	

KENOSHA, WISCONSIN

Amdt 1 31DEC20

42°36'N-87°56'W

KENOSHA RGNL (ENW)

RNAV (GPS) RWY 25R

EC-3, 10 JUL 2025 to 07 AUG 2025