

LOC I-ENW

109.35

APP CRS

068°

Rwy Idg

6600

TDZE

742

Apt Elev

742

ILS or LOC RWY 7L

KENOSHA RGNL (ENW)

DME required for LOC only. RNAV 1-GPS required.

MALSR

MISSED APPROACH: Climb to 2500 then climbing left turn to 3000 direct DIKHU and hold.

ATIS

127.175

MILWAUKEE APP CON

135.875 317.725

KENOSHA TOWER ★

118.6 (CTAF) 0 353.6

GND CON

121.875

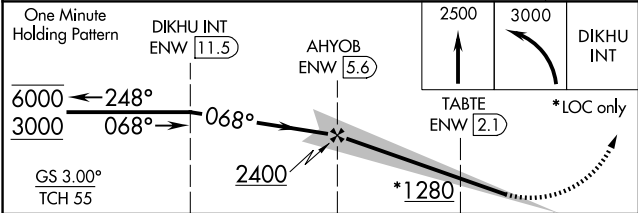
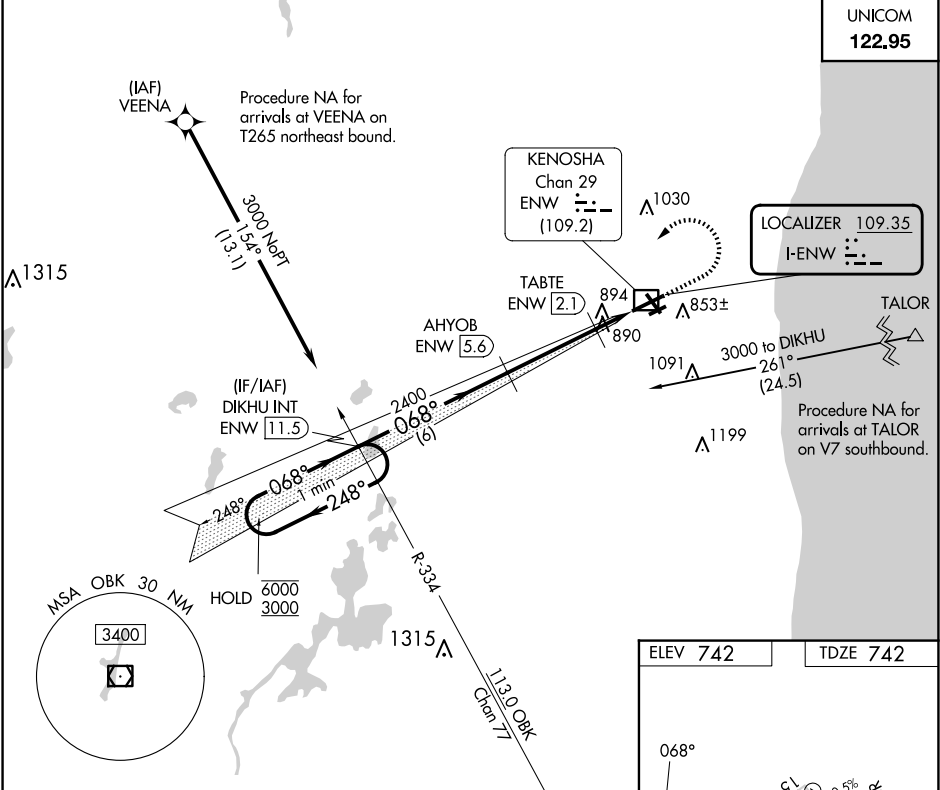
CLNC DEL

121.875

CLNC DEL

118.6

(When twr closed)



CATEGORY	A	B	C	D
S-ILS 7L	942-1/2 200 (200-1/2)			
S-LOC 7L	1140-1/2	398 (400-1/2)	1140-3/4	398 (400-3/4)
CIRCLING	1200-1 458 (500-1)	1340-1 598 (600-1)	1400-1 3/4 658 (700-1 3/4)	1440-2 1/4 698 (700-2 1/4)

