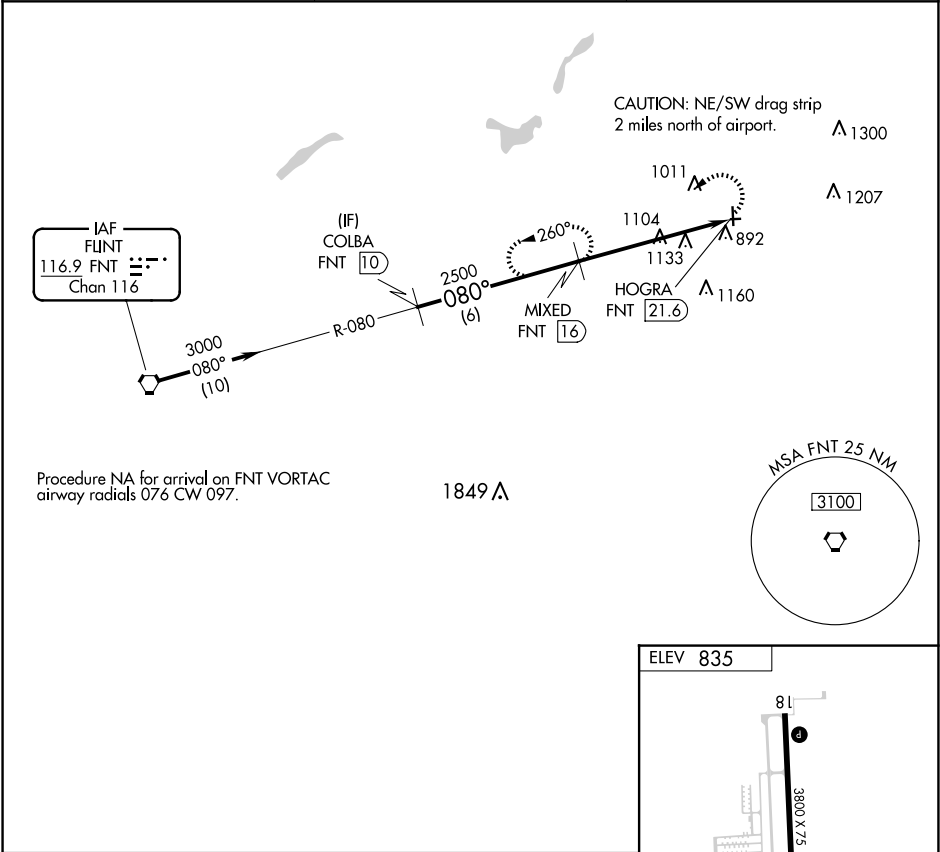


VORTAC FNT 116.9 Chan 116	APP CRS 080°	Rwy Ldg TDZE Apt Elev N/A N/A 835
---	------------------------	---

VOR-A
DUPONT/LAPEER (D95)

DME required.	MISSED APPROACH: Climbing left turn to 2500 on FNT VORTAC R-080 to MIXED 16 DME and hold.
---------------	---

AWOS-3P 134.050	GREAT LAKES APP CON ★ 118.8 257.9	UNICOM 123.0 (CTAF) 0
---------------------------	---	--



				MRL Rwy 18-36 0 REIL Rwy 18 and 36 0				
				FAF to MAP 5.6 NM				
				Knots 60 90 120 150 180				
				Min:Sec 5:36 3:44 2:48 2:14 1:52				

EC-1, 10 JUL 2025 to 07 AUG 2025

EC-1, 10 JUL 2025 to 07 AUG 2025