

WAAS CH 60934 W36A	APP CRS 004°	Rwy Ldg TDZE 3800 832 Apt Elev 835
--	------------------------	--

RNAV (GPS) RWY 36

DUPONT/LAPEER (D95)

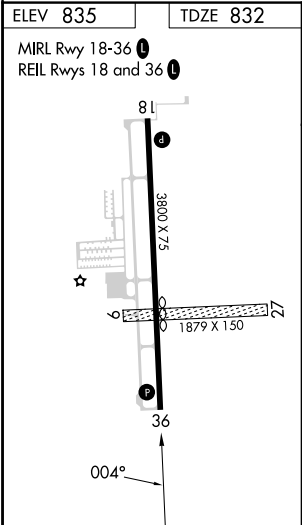
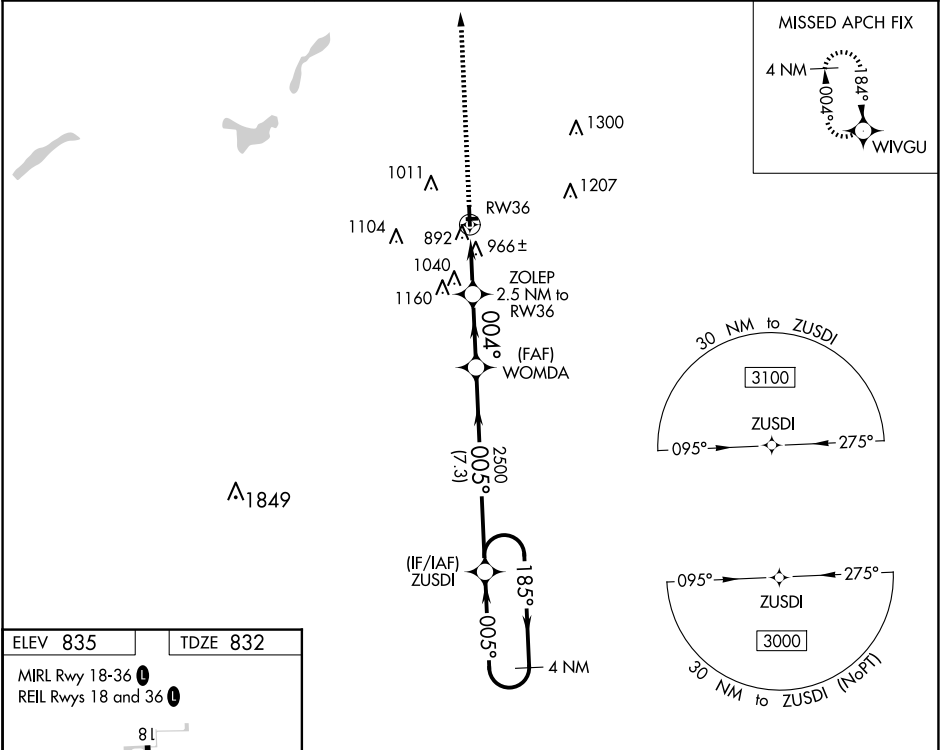
▼

⚠

DME/DME RNP-0.3 NA. Helicopter visibility reduction below ¾ SM NA. When local altimeter setting not received, use Flint altimeter setting and increase all MDA 60 feet and increase LNAV Cat C visibility ⅓ mile and LP Cat C and Circling Cat C visibility ¼ mile. Circling NA to Rwy 9 and 27.

MISSED APPROACH:
Climb to 3000 direct WIVGU and hold.

AWOS-3P 134.050	GREAT LAKES APP CON ★ 118.8 257.9	UNICOM 123.0 (CTAF) 0
---------------------------	---	---------------------------------



3000	WIVGU	Descent angle NA.	ZUSDI	4 NM Holding Pattern
		ZOLEP 2.5 NM to RW36	WOMDA	
		RW36		
		1660	2500	185°
		004°	005°	005°
		2.5 NM	2.6 NM	7.3 NM
CATEGORY	A	B	C	D
LP MDA	1220-1	388 (400-1)	1220-1⅓ 388 (400-1⅓)	NA
LNAV MDA	1260-1	428 (500-1)	1260-1¼ 428 (500-1¼)	NA
ⓐ CIRCLING	1300-1 465 (500-1)	1380-1 545 (600-1)	1460-1¾ 625 (700-1¾)	NA

EC-1, 10 JUL 2025 to 07 AUG 2025

EC-1, 10 JUL 2025 to 07 AUG 2025