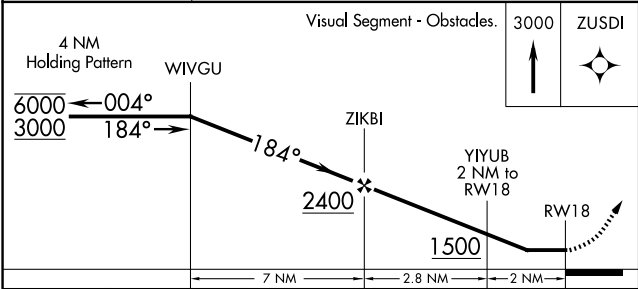
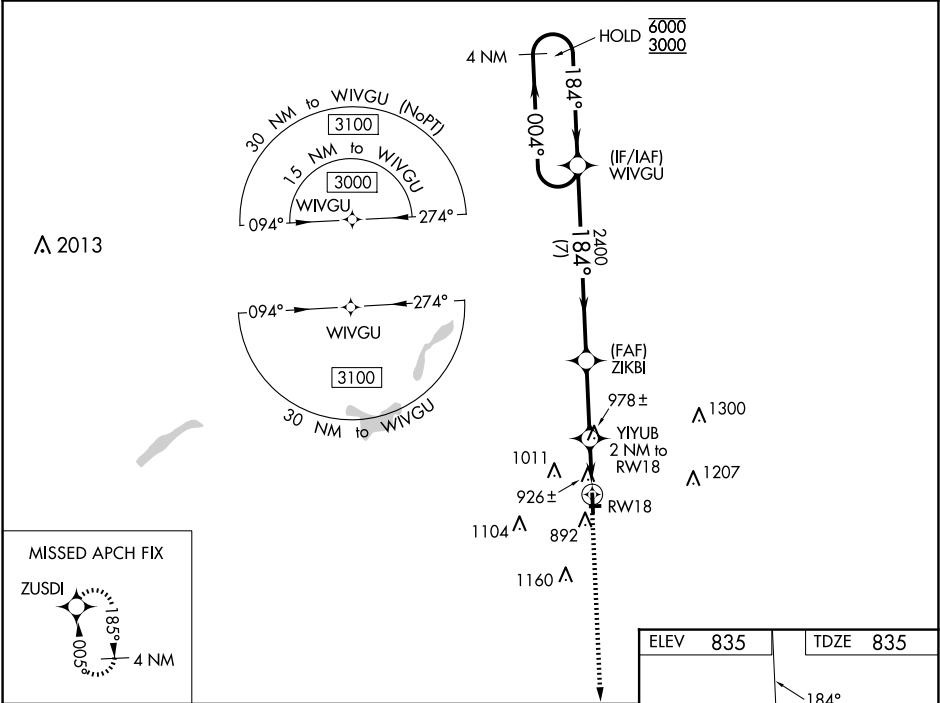


WAAS CH 56234 W18A	APP CRS 184°	Rwy Ldg TDZE 835 Apt Elev 835
--	------------------------	---

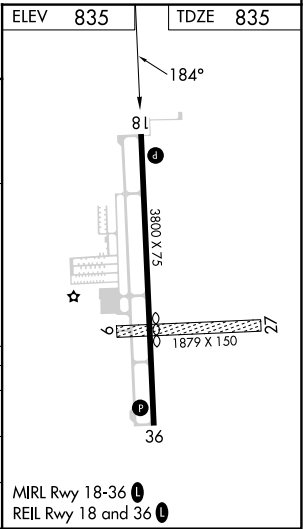
RNAV (GPS) RWY 18
DUPONT/LAPEER (D95)

RNP APCH - GPS. ▼ Rwy 18 helicopter visibility reduction below 1 SM NA. Circling NA to Rwys 9 and 27. ▲ When local altimeter setting not received, use FNT altimeter setting and increase all MDAs 60 feet and increase LP Cat C visibility ½ SM, LNAV Cat C and Circling Cat C visibility ¼ SM.	MISSED APPROACH: Climb to 3000 direct ZUSDI and hold.
--	---

AWOS-3P 134.05	GREAT LAKES APP CON ★ 118.8 257.9	UNICOM 123.0 (CTAF) 0
--------------------------	---	---------------------------------



CATEGORY	A	B	C	D
LP MDA	1180-1	345 (400-1)		NA
LNAV MDA	1240-1	405 (500-1)	1240-1 1/8 405 (500-1 1/8)	NA
CIRCLING	1300-1 465 (500-1)	1380-1 545 (600-1)	1460-1 3/4 625 (700-1 3/4)	NA



EC-1, 10 JUL 2025 to 07 AUG 2025

EC-1, 10 JUL 2025 to 07 AUG 2025