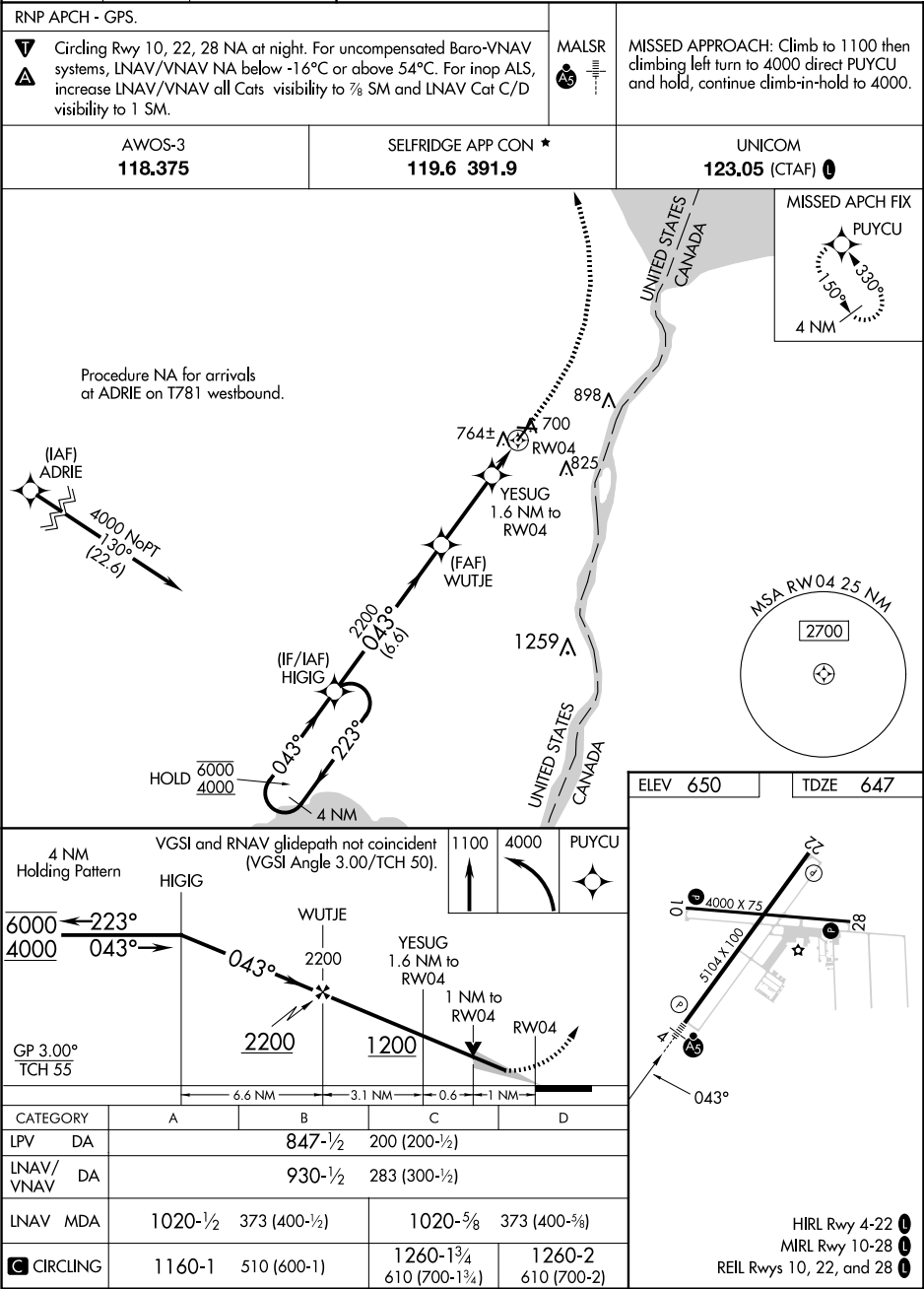


WAAS CH 53523 W04A	APP CRS 043°	Rwy ldg TDZE 647 Apt Elev 650
--	------------------------	---

RNAV (GPS) RWY 4

ST CLAIR COUNTY INTL (PHN)



AWOS-3
118.375

SELFridge APP CON ★
119.6 391.9

UNICOM
123.05 (CTAF) 0

Procedure NA for arrivals at ADRIE on T781 westbound.

(IAF) ADRIE

4000 NoPT
130°
(22.6)

764±

700

898

825

YESUG
1.6 NM to RW04

(FAF) WUTJE

2200
043°
(6.9)

2200
043°
(6.9)

1259

HOLD
6000
4000

043°

223°

4 NM

UNITED STATES

CANADA

MISSED APCH FIX

PUYCU

330°

150°

4 NM

MSA RW04 25 NM

2700

ELEV 650

TDZE 647

4 NM Holding Pattern

VGSI and RNAV glidepath not coincident (VGSI Angle 3.00/TCH 50).

HIGIG

WUTJE

YESUG
1.6 NM to RW04

1200

1 NM to RW04

RW04

GP 3.00°
TCH 55

6.6 NM

3.1 NM

0.6

1 NM

1100

4000

PUYCU

2200

2200

1200

043°

223°

CATEGORY	A	B	C	D
LPV DA	847-½		200 (200-½)	
LNAV/VNAV DA	930-½		283 (300-½)	
LNAV MDA	1020-½	373 (400-½)	1020-⅝	373 (400-⅝)
CIRCLING	1160-1	510 (600-1)	1260-1¼ 610 (700-1¼)	1260-2 610 (700-2)

HIRL Rwy 4-22 0

MIRL Rwy 10-28 0

REIL Rws 10, 22, and 28 0

EC-1, 10 JUL 2025 to 07 AUG 2025

EC-1, 10 JUL 2025 to 07 AUG 2025