

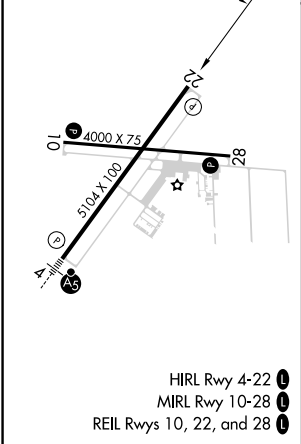
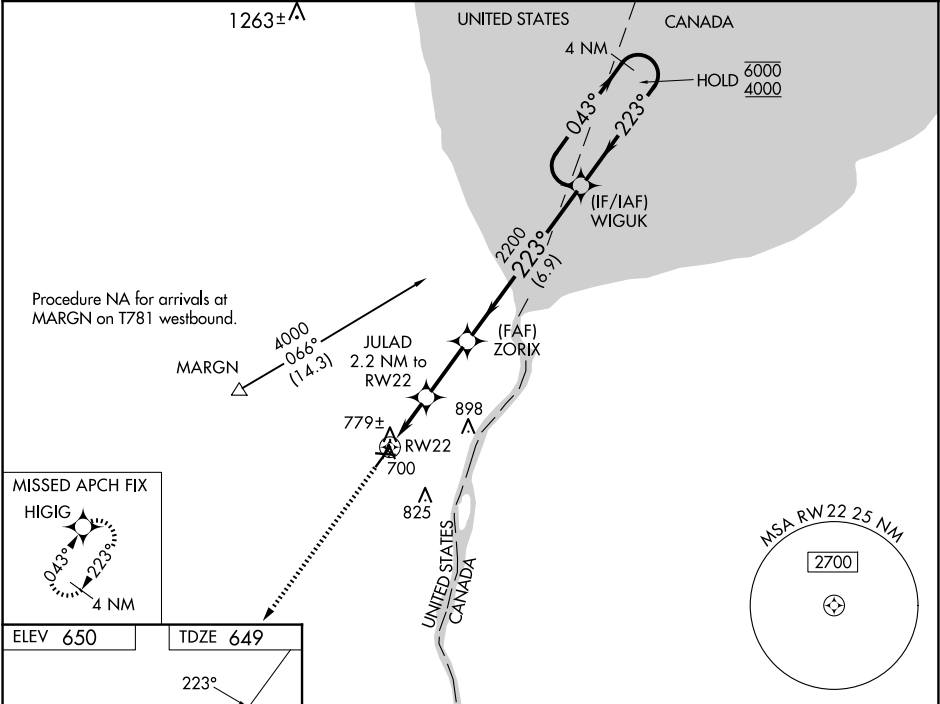
WAAS CH 97723 W22A	APP CRS 223°	Rwy ldg 5104 TDZE 649 Apt Elev 650
--	------------------------	---


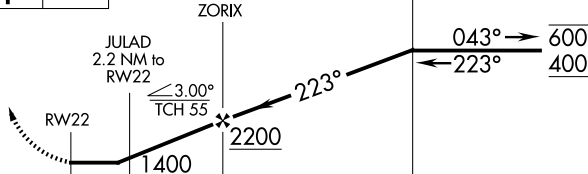
RNAV (GPS) RWY 22

ST CLAIR COUNTY INTL (PHN)

RNP APCH. <div><div><div></div><div></div></div><div>Rwy 22 helicopter visibility reduction below 1 SM NA. Straight-in Rwy 22 NA at night, Circling Rwy 10, 22, 28 NA at night.</div></div>	MISSED APPROACH: Climb to 4000 direct HIGIG and hold, continue climb-in-hold to 4000.
--	---

AWOS-3 118.375	SELFDRGE APP CON ★ 119.6 391.9	UNICOM 123.05 (CTAF) ❶
--------------------------	--	----------------------------------



4000 ↑	HIGIG 	VGSI and descent angles not coincident (VGSI Angle 3.00/TCH 45).		4 NM Holding Pattern	
					
RWY22 2.2 NM 2.5 NM 6.9 NM					
CATEGORY	A		B	C	D
LP	MDA	1020-1 371 (400-1)			
LNAV	MDA	1040-1 391 (400-1)		1040-1½ 391 (400-1½)	
CIRCLING	1160-1 510 (600-1)		1260-1¾ 610 (700-1¾)		1260-2 610 (700-2)

EC-1, 10 JUL 2025 to 07 AUG 2025

EC-1, 10 JUL 2025 to 07 AUG 2025