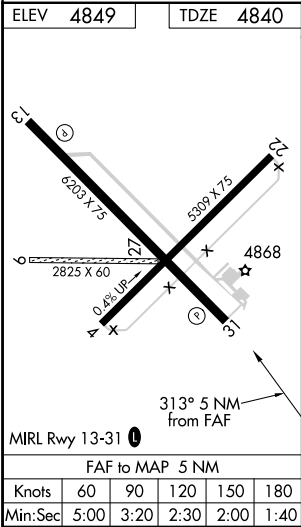
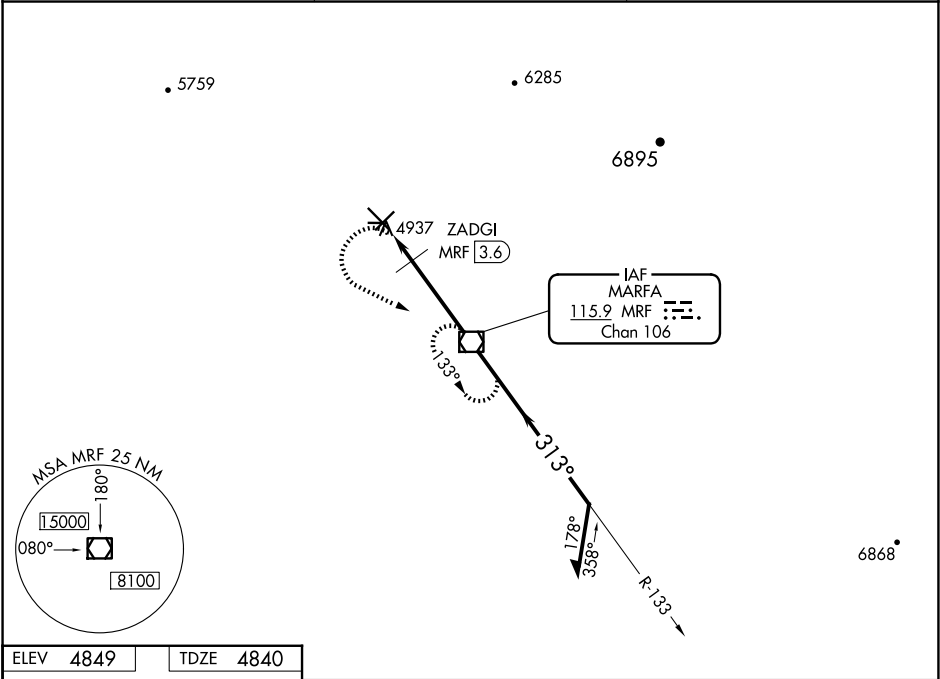


VOR/DME MRF	APP CRS	Rwy Idg	6203
115.9	313°	TDZE	4840
Chan 106		Apt Elev	4849

VOR RWY 31
MARFA MUNI (MRF)

When local altimeter setting not received, procedure NA. Circling NA to Rwy 9, 27.	MISSED APPROACH: Climbing left turn to 9000 direct MRF VOR/DME and hold, continue climb-in-hold to 9000.
---	--

AWOS-3PT 134.025	ALBUQUERQUE CENTER 135.875 292.15	UNICOM 122.8 (CTAF) 0
---------------------	--------------------------------------	--------------------------



9000	MRF	MRF VOR/DME	Remain within 10 NM	
	ZADGI MRF 3.6	133°	8100	
	MRF 5	313°	VGSI and descent angles not coincident (VGSI Angle 3.00/TCH 36).	
	1.4	3.6 NM		
CATEGORY	A	B	C	D
S-31	5360-1	520 (600-1)	5360-1 $\frac{3}{8}$	520 (600-1 $\frac{3}{8}$)
CIRCLING	5360-1	511 (600-1)	5440-1 $\frac{1}{2}$ 591 (600-1 $\frac{1}{2}$)	5780-3 931 (1000-3)
ZADGI FIX MINIMUMS				
S-31	5200-1 360 (400-1)			
CIRCLING	5280-1 431 (500-1)	5300-1 451 (500-1)	5440-1 $\frac{1}{2}$ 591 (600-1 $\frac{1}{2}$)	5780-3 931 (1000-3)

SC-3, 10 JUL 2025 to 07 AUG 2025

SC-3, 10 JUL 2025 to 07 AUG 2025