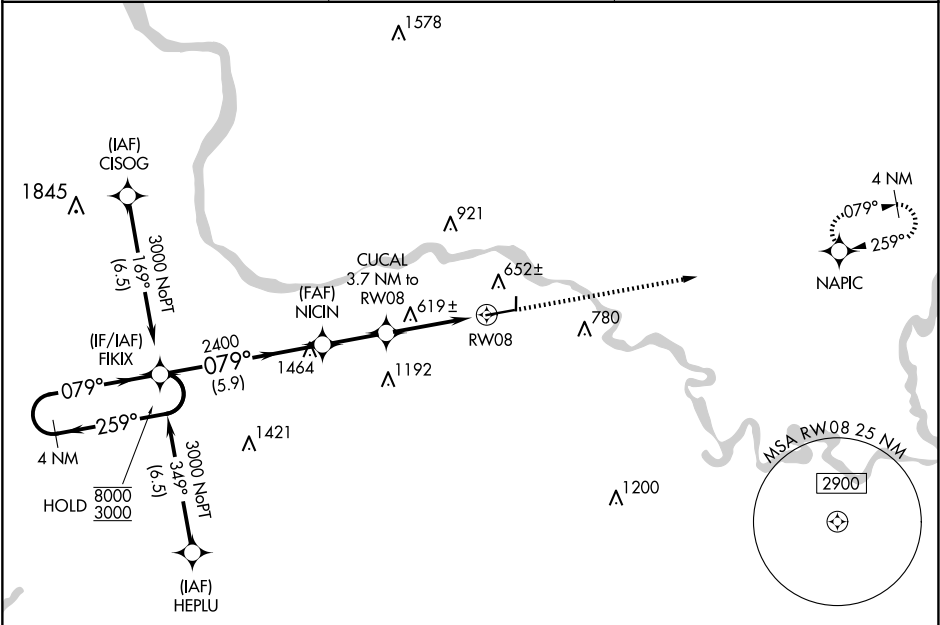


WAAS CH 97717 W08A	APP CRS 079°	Rwy Ldg TDZE 463 Apt Elev 465
--	------------------------	---

RNAV (GPS) RWY 8

BATESVILLE RGNL (BVX)

RNP APCH - GPS.		MISSED APPROACH: Climb to 3000 direct NAPIC and hold.
Circling NA north of Rwy 8-26. For uncompensated Baro-VNAV systems, LNAV/VNAV NA below -15°C or above 54°C. Circling Rwy 36 NA at night. Circling NA to Rwy 18.		
AWOS-3PT 126.375	MEMPHIS CENTER 126.85 281.55	UNICOM 122.8 (CTAF) 0



4 NM Holding Pattern		ELEV 465		TDZE 463	
FIKIX		NICIN		CUCAL	
2400		2400		3.7 NM to RW08	
5.9 NM		2.3 NM		2.5 NM	
1.2 NM		1.2 NM		1.2 NM to RW08	
RW08		RW08		RW08	
CATEGORY	A	B	C	D	
LPV DA	663-3/4		200 (200-3/4)		
LNAV/VNAV DA	713-3/4		250 (300-3/4)		
LNAV MDA	880-1	417 (500-1)	880-1 1/8	417 (500-1 1/8)	
CIRCLING	980-1 515 (600-1)	1000-1 535 (600-1)	1220-2 1/4 755 (800-2 1/4)	1440-3 975 (1000-3)	REIL Rwy 8 and 26 0 MIRL Rwy 8-26 0