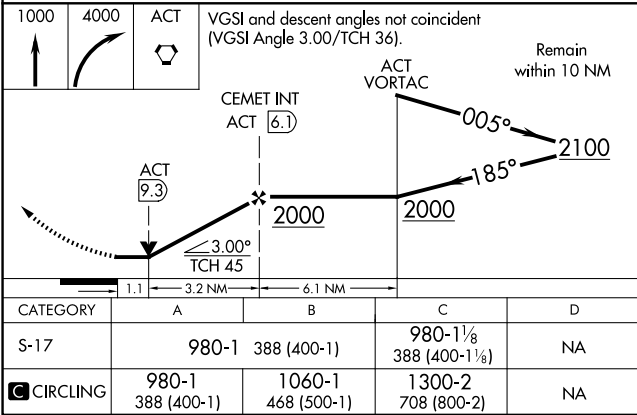
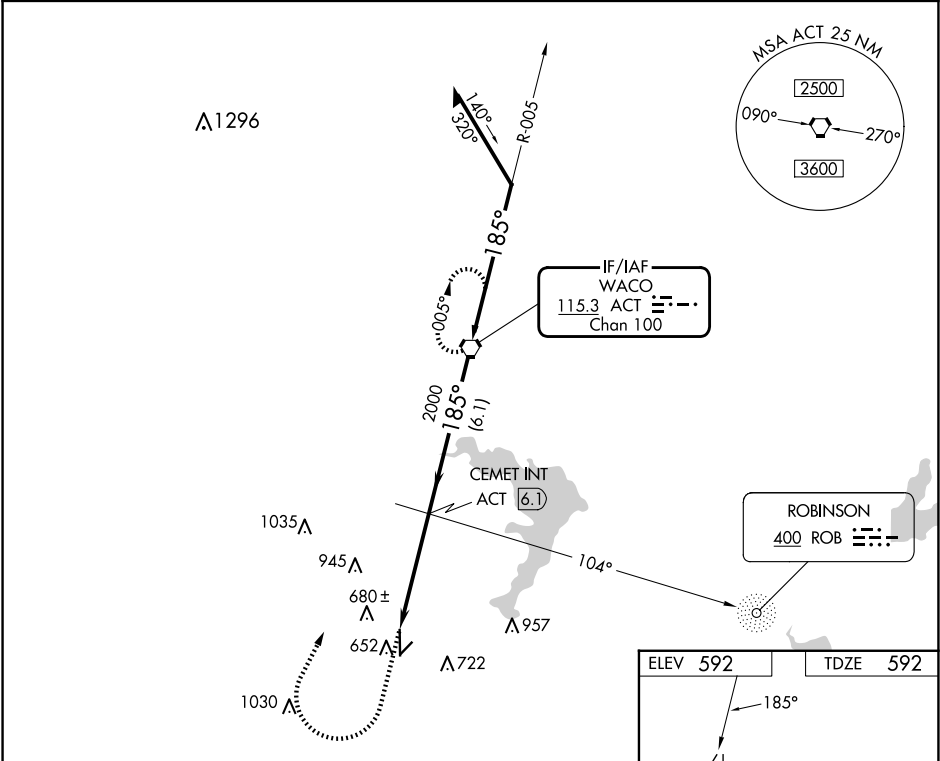


VORTAC ACT	APP CRS	Rwy Idg	5501
115.3	185°	TDZE	592
Chan 100		Apt Elev	592

VOR RWY 17
MC GREGOR EXEC (PWG)

ADF or DME required.		MISSED APPROACH: Climb to 1000 then climbing right turn to 4000 direct ACT VORTAC and hold, continue climb-in-hold to 4000.	
ASR			
AWOS-3PT	WACO APP CON *	GCO	UNICOM
135.525	127.65 352.0	121.725	123.05 (CTAF) 0



ELEV 592	TDZE 592
REIL Rwy 17 0	
MIRL Rwy 17-35 0	
FAF to MAP 4.3 NM	
Knots	60 90 120 150 180
Min:Sec	4:18 2:52 2:09 1:43 1:26

SC-3, 10 JUL 2025 to 07 AUG 2025

SC-3, 10 JUL 2025 to 07 AUG 2025