

WAAS CH <b>87130</b> <b>W35A</b>	APP CRS <b>353°</b>	Rwy Idg <b>5501</b> TDZE <b>580</b> Apt Elev <b>592</b>
--	------------------------	---

RNAV (GPS) RWY 35  
MC GREGOR EXEC (PWG)

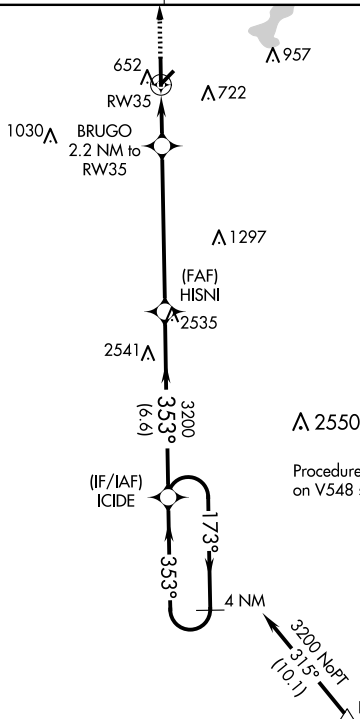
RNP APCH - GPS
----------------

**T**  
**A**  
**ASR**

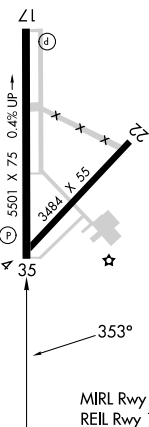
Baro-VNAV NA when using Waco Rgnl altimeter setting. For uncompensated Baro-VNAV systems, UNAV/VNAV NA below -16°C or above 54°C. When local altimeter setting not received, use Waco Rgnl altimeter setting and increase LPV DA to 861 feet; increase UNAV/VNAV DA to 861 feet; increase all MDAs 40 feet and UNAV visibility Cat B ¼ SM, and Circling visibility Cat B/C ¼ SM. Rwy 35 helicopter visibility reduction below ¾ SM NA.

**MISSED APPROACH:** Climb to 2500 direct BLDEE and on track 018° to ACT VORTAC and hold.

AWOS-3PT <b>135.525</b>	WACO APP CON ★ <b>127.65 352.0</b>	GCO <b>121.725</b>	UNICOM <b>123.05 (CTAF) 0</b>
----------------------------	---------------------------------------	-----------------------	----------------------------------



ELEV 592		TDZE 580
----------	--	----------



CATEGORY	A	B	C	D
LPV DA	830- $\frac{3}{4}$	250 (300- $\frac{3}{4}$ )		NA
LNAV/VNAV DA	830- $\frac{3}{4}$	250 (300- $\frac{3}{4}$ )		NA
LNAV MDA	960-1	380 (400-1)	960-1 $\frac{1}{8}$ 380 (400-1 $\frac{1}{8}$ )	NA
CIRCLING	1020-1 428 (500-1)	1060-1 468 (500-1)	1300-2 708 (800-2)	NA